

# BOND 2020

## PROPOSITION A - STREETS



Staples St. improved under the Bond 2018 program.

### AIRPORT - \$4.8M

#### Morgan to Horne

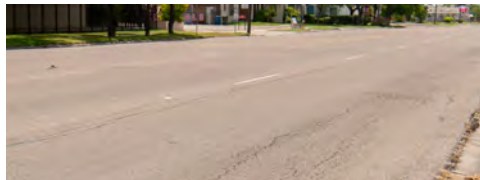
Rehabilitation of existing 4-lane roadway with new shoulders and pavement, guardrail replacement, new sidewalks in front of State Living Center, installation of ADA compliant curb ramps, signage, pavement markings, and upgraded and additional street illumination.



### ALAMEDA - \$6.3M

#### Texan Trail to Chamberlain

Rehabilitation of existing 4-lane roadway with continuous center turn lane with new pavement, curb and gutter, minor sidewalk repairs, installation of ADA compliant curb ramps, signage, pavement markings, and upgraded and additional street illumination.



### BEACH ACCESS RD NO. 3 - \$400K

#### SH361 to Beach

Design and environmental permitting of construction of new 2-lane access road to the beach.



### BROWNLEE - \$2.7M

#### Staples to Morgan

Reconstruction of existing 4-lane roadway with new pavement, curb and gutter, sidewalk repairs, installation of ADA compliant curb ramps, signage, pavement markings, and upgraded and additional street illumination.



Project scopes, locations and costs are estimates based on information currently available and are, therefore, subject to reasonable change on the basis of new and refined information up to the time of completion.

# BOND 2020

## 22 PROJECTS - \$61M

### CARROLL - \$2.8M

#### Holly to Dead End

Reconstruction of existing 2-lane roadway on both sides of the drainage right-of-way with new pavement, sidewalk repairs, curb and gutters, installation of ADA compliant curb ramps, signage, pavement markings, and upgraded additional street illumination.



### COMANCHE - \$2.5M

#### Carancahua to Alameda

Reconstruction of existing 2-lane roadway with new pavement, curb and gutter, sidewalks, installation of ADA compliant curb ramps, signage, pavement markings, and upgrade/add street illumination.



### ENCANTADA - \$650K

#### Encantada to Nueces County Park

Traffic Safety Improvement Project to improve operational safety by reducing conflict points at the intersection of Park Road 22 & Encantada/Nueces County Park Road.



### EVERHART - \$4.3M

#### Staples to McArdle

This is a continuation of previous phases. Reconstruction of existing 4-lane roadway with continuous center turn lane with new pavement, curb and gutter, sidewalk repairs, installation of ADA compliant curb ramps, signage, pavement markings, and traffic signalization improvements.



### EVERHART - \$4.3M

#### Alameda to Staples

This is a continuation of previous phases. Reconstruction of existing 4-lane roadway with continuous center turn lane with new pavement, curb and gutter, sidewalk repairs, installation of ADA compliant curb ramps, signage, pavement markings, and upgraded and additional street illumination.



### FLATO - \$4.2M

#### Bates to Bear

This is a continuation of previous phases. Reconstruction of existing 2-lane roadway with new shoulders and concrete pavement, new sidewalks, curb and gutters, installation of ADA compliant curb ramps, signage, pavement markings, and upgraded and additional street illumination.



# BOND 2020

## PROPOSITION A - STREETS



Cape May Dr. improved under the RSRP Bond 2016 program.

### FRONTIER - \$2.5M

#### McKinzie to Rockwood

Reconstruction of existing 2-lane roadway with new pavement, curb and gutter, sidewalks, installation of ADA compliant curb ramps, signage, and pavement markings.

### HEARN - \$2.1M

#### Callicoatte to Dead End

Reconstruction of existing 2-lane roadway with new pavement, curb and gutter, sidewalks, installation of ADA compliant curb ramps, signage, pavement markings, and upgrade/add street illumination.



### JACKFISH - \$900K

#### End of Aquarius to Park Rd 22

Rehabilitation of existing 2-lane roadway with new pavement, minor curb and gutter repairs, sidewalk repairs, installation of ADA compliant curb ramps, signage, pavement markings, and upgraded and additional street illumination.



### LIPES - \$3.1M

#### Sunwood to Staples

This is a continuation for previous street project. Reconstruction of existing 2-lane roadway new pavement, minor curb and gutter repairs, sidewalk repairs, installation of ADA compliant curb ramps, signage, pavement markings, and upgraded and additional street illumination.



### PARK RD 22 - \$300K

#### Compass to Park Rd 22

Median improvements to create left turn lane from Compass to Park Road 22.



Project scopes, locations and costs are estimates based on information currently available and are, therefore, subject to reasonable change on the basis of new and refined information up to the time of completion.

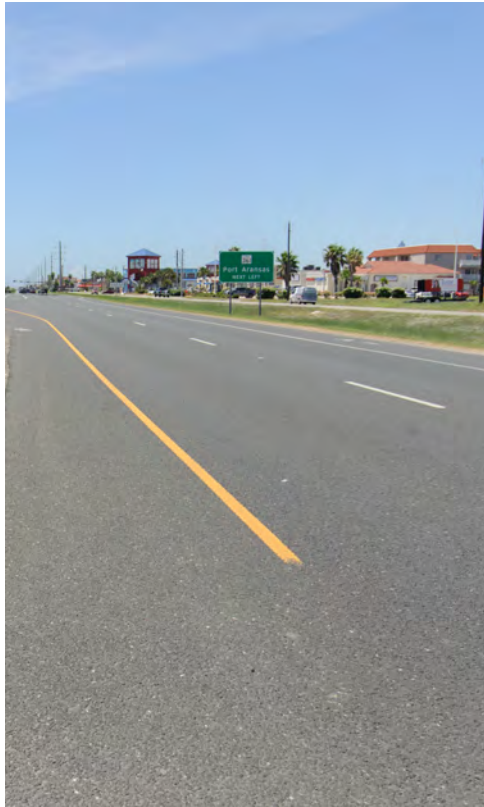
# BOND 2020

## 22 PROJECTS - \$61M

### **PARK RD 22 - SOUTH ACCESS RD - \$1.6M**

#### **Commodore to Jackfish**

Rehabilitation to reconstruction of existing service road including add sidewalks, installation of ADA compliant curb ramps, and upgraded and additional street illumination. This is contingent upon Texas Department of Transportation approval.



### **RODD FIELD - \$4.8M**

#### **Yorktown to Adler**

Construction of new 2-lane roadway with roadside ditches, installation of sidewalks, installation of ADA compliant curb ramps, signage, pavement markings, and added street illumination.

### **STRASBOURG - \$2.0M**

#### **Grenoble to Marseille**

This is a continuation of previous phases. Reconstruction of existing 2-lane roadway new pavement, curb and gutter repairs, sidewalk repairs, installation of ADA compliant curb ramps, signage, pavement markings, and upgraded and additional street illumination.



### **TRINITY RIVER - \$2.4M**

#### **FM 624 to Wood River**

Rehabilitation of existing 2-lane roadway with new pavement, sidewalk repairs, curb and gutter, installation of ADA compliant curb ramps, signage, pavement markings, and upgrade/add street illumination.



### **WALDRON - \$3.95M**

#### **SPID to Purdue**

This is a concrete pavement rehabilitation project of existing 4-lane roadway with continuous center turn lane.



### **WILDCAT - \$2.5M**

#### **FM 624 to Teague**

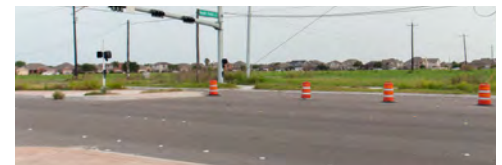
Rehabilitation of existing 2-lane roadway with shoulders with new pavement, minor sidewalk repairs, installation of two ADA compliant curb ramps, signage, and pavement markings.



### **YORKTOWN - DESIGN ONLY - \$1.9M**

#### **Rodd Field to Oso Creek Bridge**

Design work only for the reconstruction of existing 2-lane roadway with shoulders with new pavement, sidewalk repairs, installation of ADA compliant curb ramps, signage, pavement markings, and upgraded and additional street illumination.



Project scopes, locations and costs are estimates based on information currently available and are, therefore, subject to reasonable change on the basis of new and refined information up to the time of completion.