



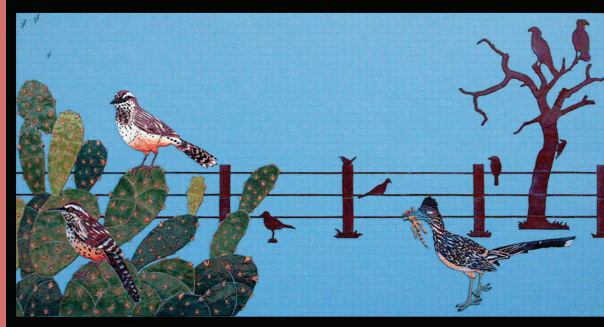
**MELVILLE'S
MOBY
DICK**

Greg Reuter

Ceramic tile mural, depicting the whale emerging from the page, 1992. Funded by the Library Trust Fund and Paul and Mary Haas Foundation Grant.

Location
Greenwood
Branch Library.
**Greenwood
Branch
Library**

This library specializes in bilingual and test preparation materials and houses the Corpus Christi Literary Council.
4044
Greenwood Dr.



**WILD HORSE DESERT
&
NUECES RIVER VALLEY**

Aloe Tile

Two ceramic tile murals (**WILD HORSE DESERT** shown), 2007. Funded by the Arts & Cultural Commission and Friends of Corpus Christi Public Libraries. Also look for work by Dinah Bowman and other artists.
Location Northwest Branch Library.

Northwest Branch Library

This library works closely with Calallen ISD, Tuloso-Midway ISD, serves Robstown and communities in the northwest area of Nueces and San Patricio counties.
Location 3202 McKinzie Road.



Arts & Cultural
Commission

The Arts & Cultural Commission strives:
To expand the opportunities for the citizens of Corpus Christi to experience art in public places
To encourage the inclusion of works of art in private developments in the city
To encourage economic benefits gained through the enhancement of tourism

Photography and Brochure by Lynda A. J. Jones

**CLASSIC
CHILDREN'S
STORY
BOOKS**

**Michelle
Smythe
&
Day Wheeler**

Twelve acrylic on wood paintings (detail of **ALICE IN WONDERLAND** shown), 2005

Funding by private donations. In the Mary and Jeff Bell Children's Library at the La Retama Central Library.



Rooms With a View
The Arts & Cultural Commission presents the City of Corpus Christi Library Art Collection



Anita and W.T. Neyland Public Library

(formerly Parkdale Public Library)

This library is the busiest branch of the Corpus Christi Public Library System and serves a population of over 109,000 on the city's growing Southside. Location 1230 Carmel Parkway.



THE LEARNING TREE

Stephen Gambill

Oil on canvas mural and four suspended cast sculptures of birds, 1996. Funded by the Library Trust Fund. Location Anita and W.T.Neyland Public Library.



EVERY QUESTION IS A KEY

Ricardo Ruiz

Oil on canvas, 2008. Funded by the Arts & Cultural Commission. Also look for "Historical Children's Illustrator Collection", sculptures and bas reliefs. Location Anita and W.T. Neyland Public Library.



JUAREZ

Benito Huerta

Oil, oil stick, straw, pencil on canvas, 1987. Funded by the Arts & Cultural Commission. Also look for works by Dee Wolf, Aloe Tile and others. Located La Retama Central Library.

SUNSEEKER

(see cover)

Danny M. O'Dowdy

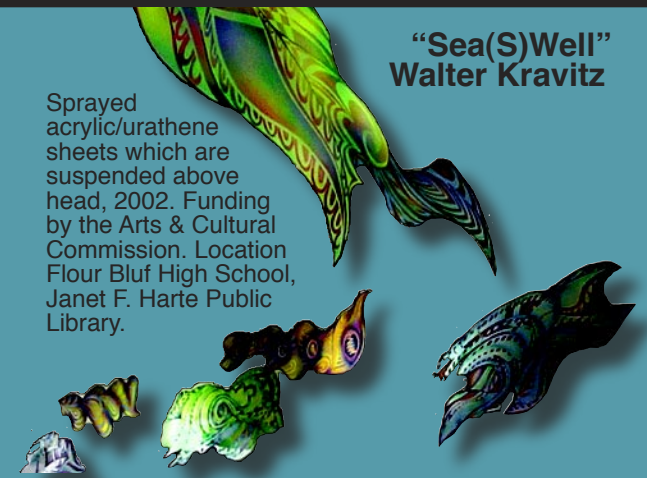
Ferrous concrete and tile sculpture, 1989. Funded by the Arts & Cultural Commission and the Library Trust Fund. Location La Retama Central Library.

La Retama Central Library

This library has a broad range of reference services, adult and children resources, special collections, and historical information. Look for more art, including the **SUNSEEKER** maquette. Location 805 Comanche.

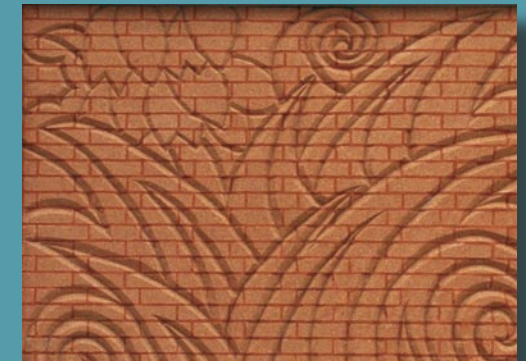
"Sea(S)Well" Walter Kravitz

Sprayed acrylic/urathene sheets which are suspended above head, 2002. Funding by the Arts & Cultural Commission. Location Flour Bluf High School, Janet F. Harte Public Library.



Janet F. Harte Public Library

This library combines collections with the local Flour Bluff High School Library which features a wide range of informational resources. In the patio, look for twelve bronze pieces by Greg Reuter entitled "The Year in Sand". The Noel McArde Gallery is also located in the library and features temporary exhibits. Location 2629 Waldron Road.



"AIR EARTH WATER"

Molly Merkle

Carved brick mural on three exterior walls (detail), 2008. Funding by the Arts & Cultural Commission.

Also look for glass etching by Cathy and Ron McInturff, and works by other artists.

Location Dr. Clotilde P. Garcia Public Library.

Dr. Clotilde P. Garcia Public Library

This Library is the newest addition to the Corpus Christi Public Libraries and a joint project with the Corpus Christi Independent School District. Location Kaffie Middle School campus, 5930 Brockhampton.