

# PROJECT OVERVIEW



# Padre/Mustang Island Mobility Plan



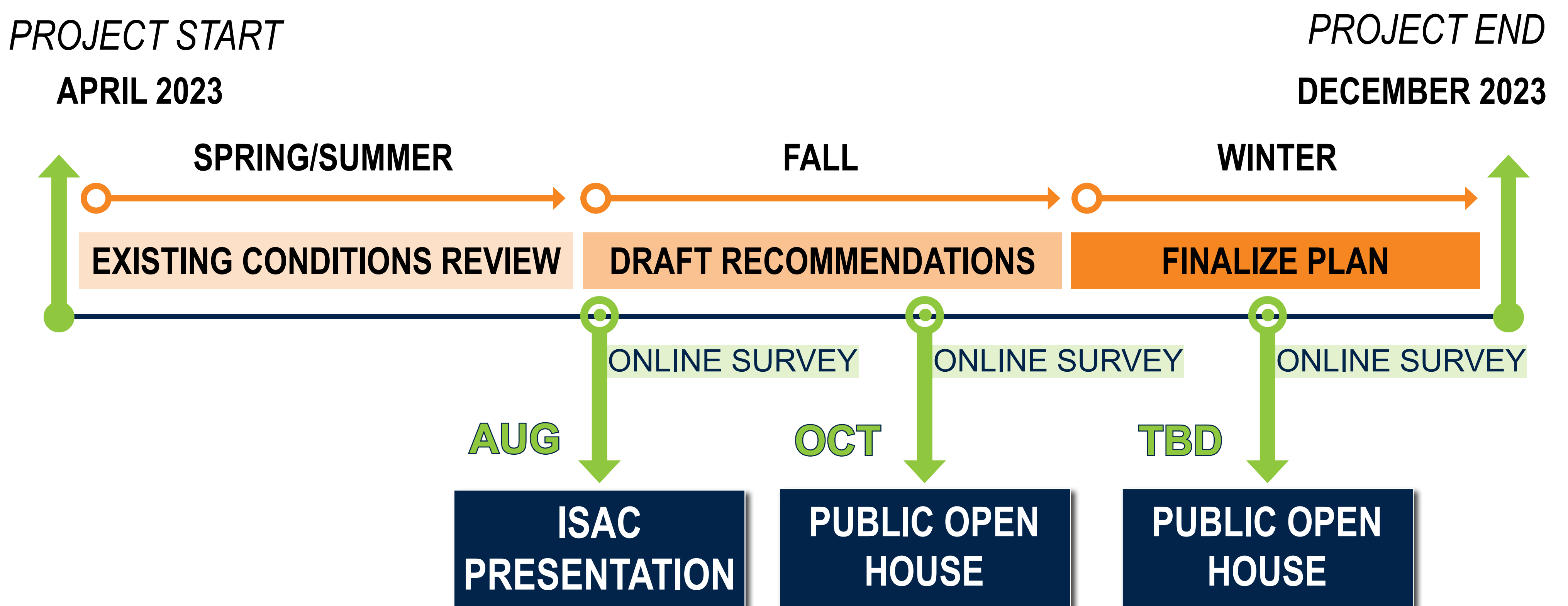
## Project Description

The Padre/Mustang Island Mobility Study was initiated by the City of Corpus Christi to further previous planning efforts conducted for the area.

The Study is analyzing the existing transportation system for walking, cycling, golf cart, and watercraft pathways while taking into consideration the recommendations from previous planning efforts and current development projects. The City is coordinating with TxDOT for any potential recommendations that would impact those state-owned facilities, PR22 or SH361.

This Study will create a Plan for a comprehensive transportation network that connects residential neighborhoods to commercial and retail uses, as well as identifies critical routes for walking, bicycling, and golf carts.

## Project Timeline





# Padre/Mustang Island Mobility Plan

## ISLAND MOBILITY GOALS

### Padre/Mustang Island Area Development Plan

**1** Improve traffic flow, island ingress and egress, safety, and roadway quality.

**2** Accommodate safe, efficient movement of pedestrians, bikes, and golf carts throughout the Island.

### Mobility CC

**1** Integrate street infrastructure that provides balanced transportation options and design features into street design and construction to create safe and inviting environments for all users to walk, bicycle, and use public transportation.

**2** Create practices that balance transportation options and are a routine part of the City of Corpus Christi's everyday operations.

**3** Plan and develop a comprehensive and convenient bicycle and pedestrian transportation network.

**4** Promote bicycle, pedestrian, and public transportation rider safety.

**5** Make public transportation an interconnected part of the transportation network.

**6** Provide children with safe and appealing opportunities for walking and bicycling to school in order to decrease rush-hour traffic, and fossil fuel consumption, encourage exercise and healthy living habits in children, and reduce the risk of injury to children through traffic collisions near school.

**7** Create safe routes to parks and open spaces.

**8** Ensure that residents of all ages and income levels can walk and bicycle to meet their daily needs.





# Padre/Mustang Island Mobility Plan

## Online Survey and Map Feedback Summary

Do you feel safe/comfortable walking from the neighborhoods to commercial properties around the Island?



"No sidewalks to get to commercial areas and to high of vehicle traffic"

"I use the wide sidewalks on main streets. Having sidewalks on side streets would be great"

"There is not adequate space in the bike lanes and not protected. So if I am walking with a stroller especially, I am concerned about my safety and a child's"

"There are very few sidewalks or bike lanes. This makes it necessary to walk on the street with traffic"

Do you feel safe/comfortable sharing the road with vehicles when you ride a bike on the Island?

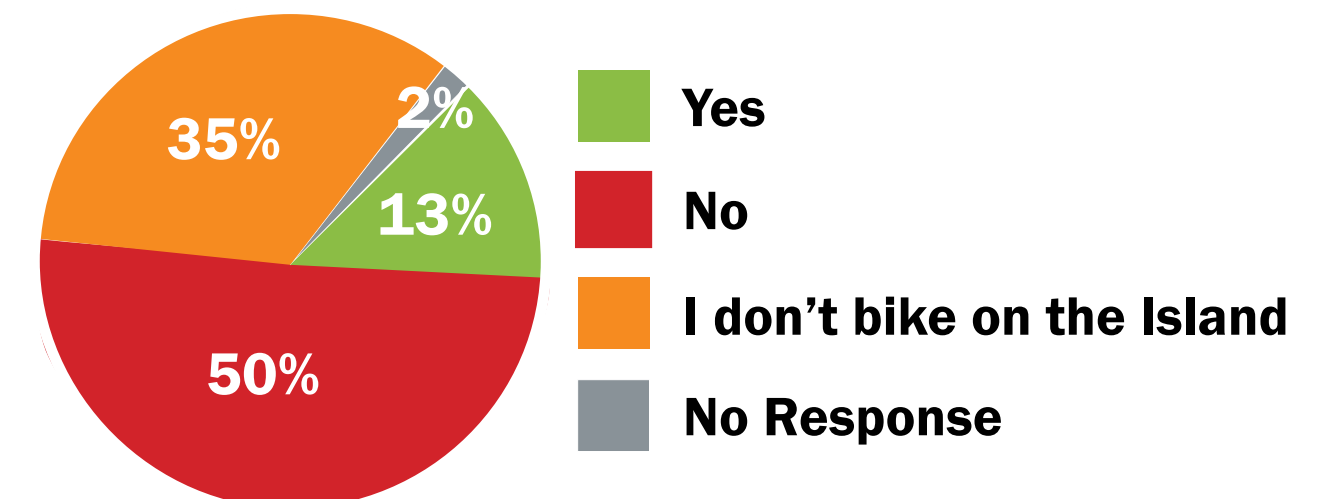
"Traffic is not bike tolerant"

"No dedicated paths with protection from vehicles who don't care"

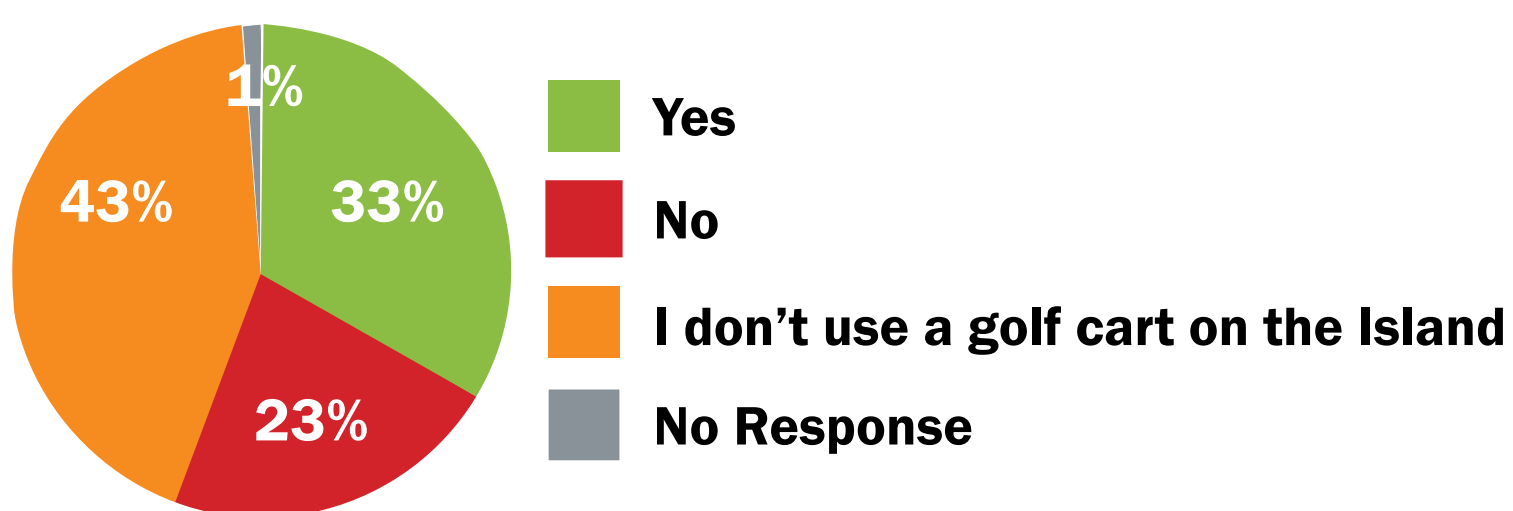
"I have been hit by a car while bicycling"

"Too many cars parked on streets forcing cyclists into traffic lanes"

"Bike trails would be ideal"



Do you feel safe/comfortable sharing the road with vehicles when you use a golf cart to make trips on the Island?



"Unfortunately I see children under 16 driving and speeding"

"Create different paths for bikes and golf carts"

"Just not enough room on Whitecap to drive on the side and feel there should eventually be a golf cart lane or something"

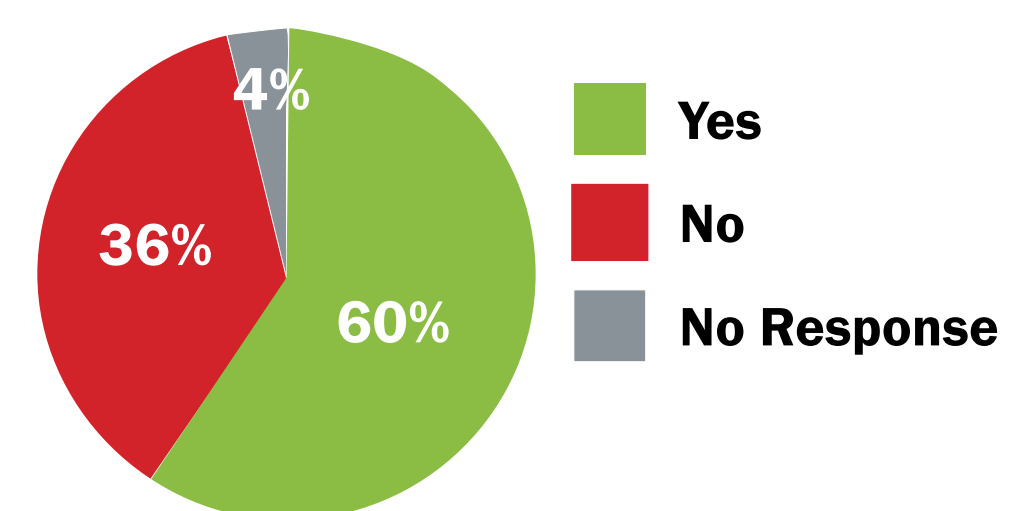
Do you feel safe/comfortable crossing neighborhood streets at intersections?

"You have to be very careful even where there are crossing lights vehicles will often not allow you to cross"

"Sidewalks need to be on the main roads, not so much residential streets where traffic speeds are less"

"They are not marked as crossings, they have no 'pedestrian awareness' signage"

"On neighborhood streets for the most part people will drive responsibly and share the space"



# EXISTING CONDITIONS



# Padre/Mustang Island Mobility Plan

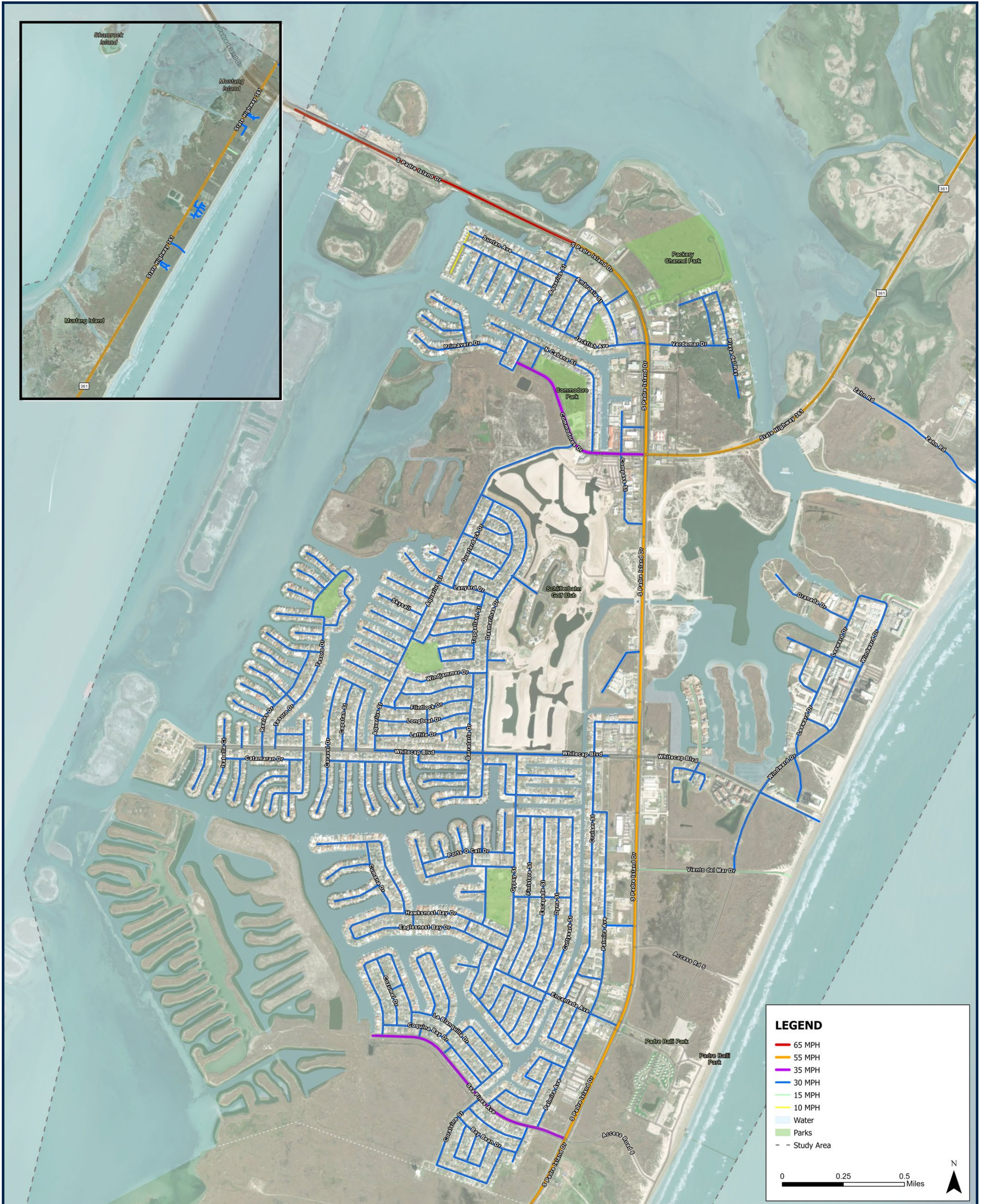
## Existing Urban Transportation Plan





# Padre/Mustang Island Mobility Plan

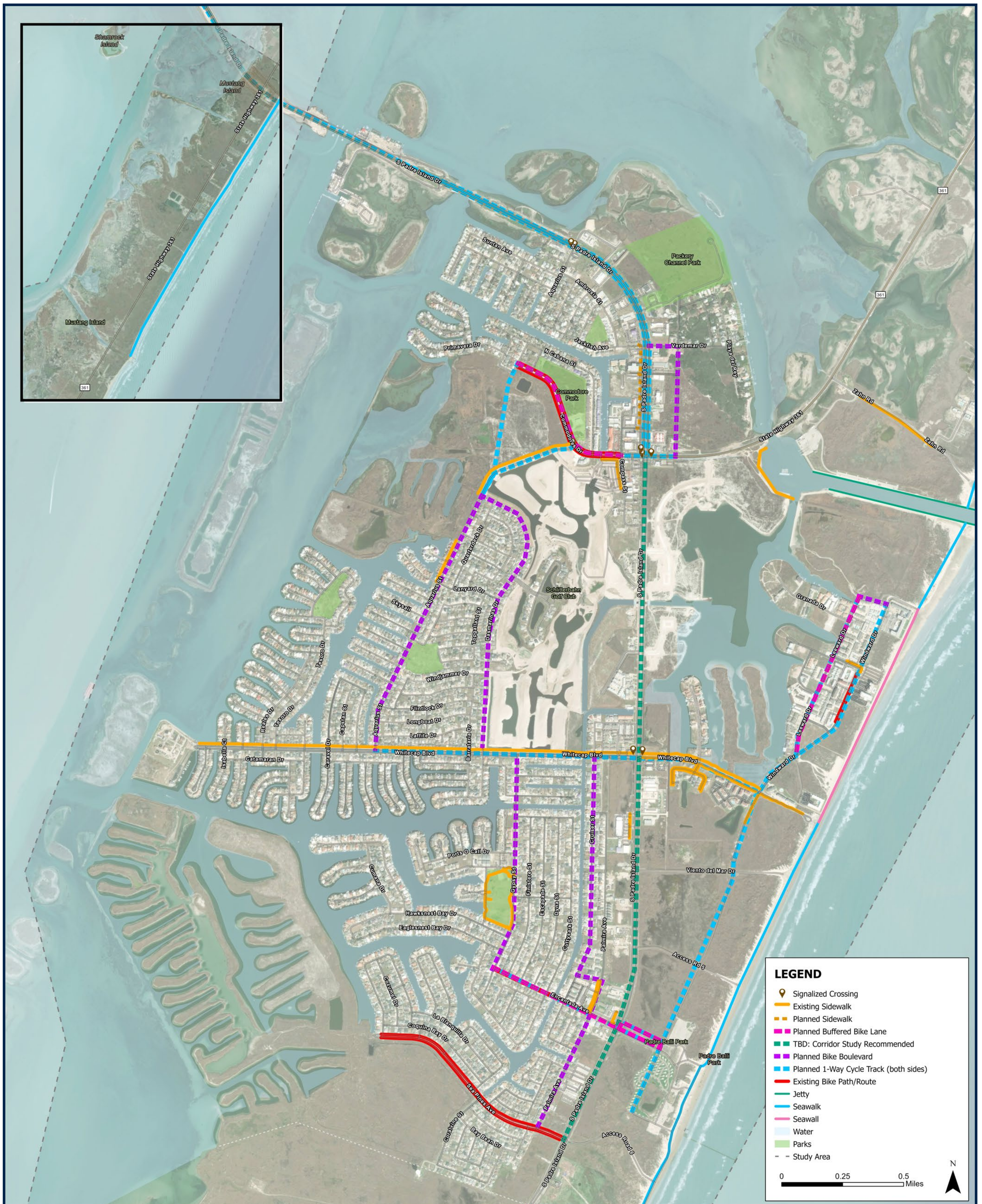
## Posted Speed Limits





# Padre/Mustang Island Mobility Plan

## Existing and Previously Planned Sidewalk & Bicycle Facilities







# Padre/Mustang Island Mobility Plan

## Existing Waterways/Canals & Access Points

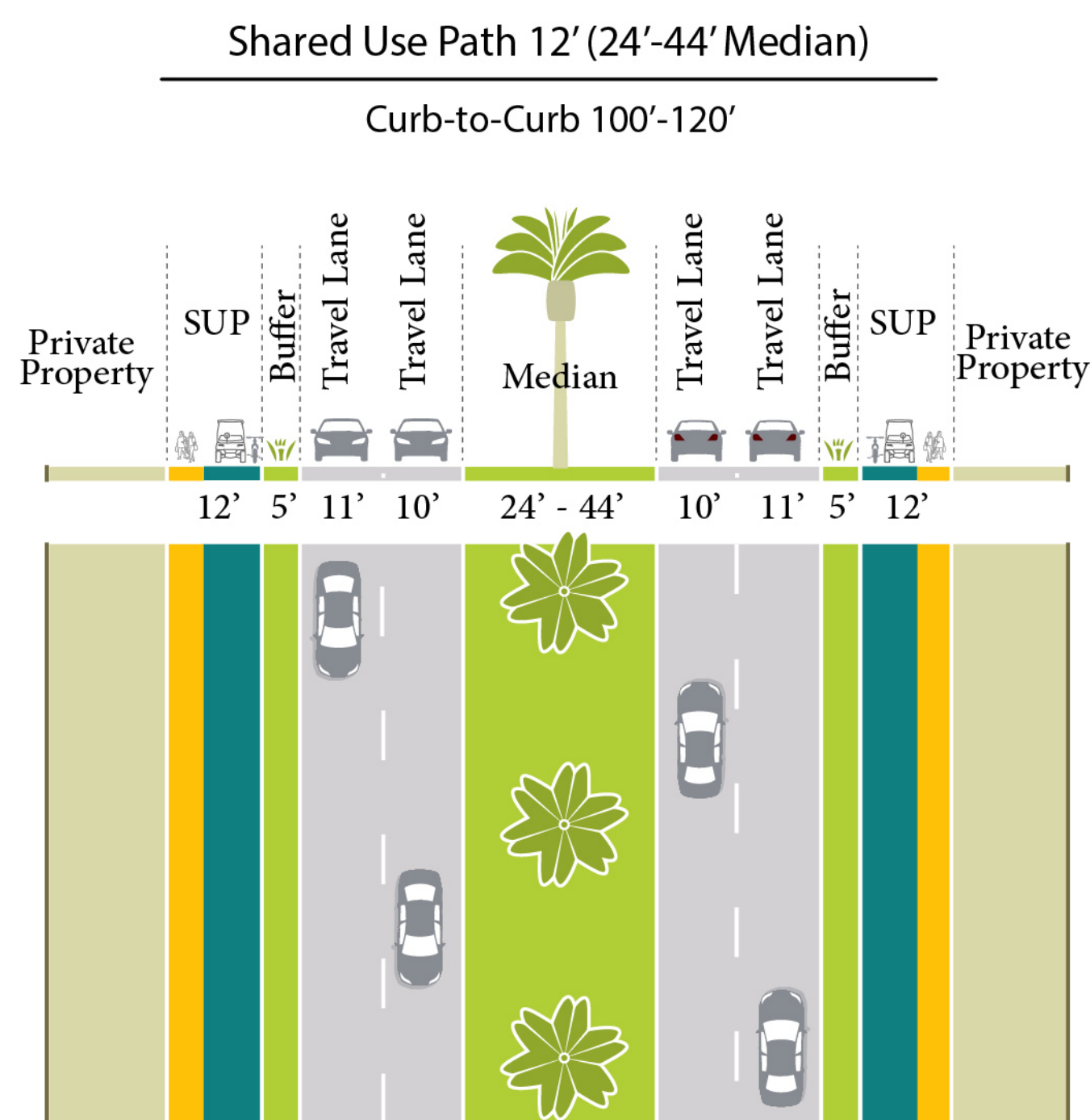


# **DRAFT NETWORK RECOMMENDATIONS**



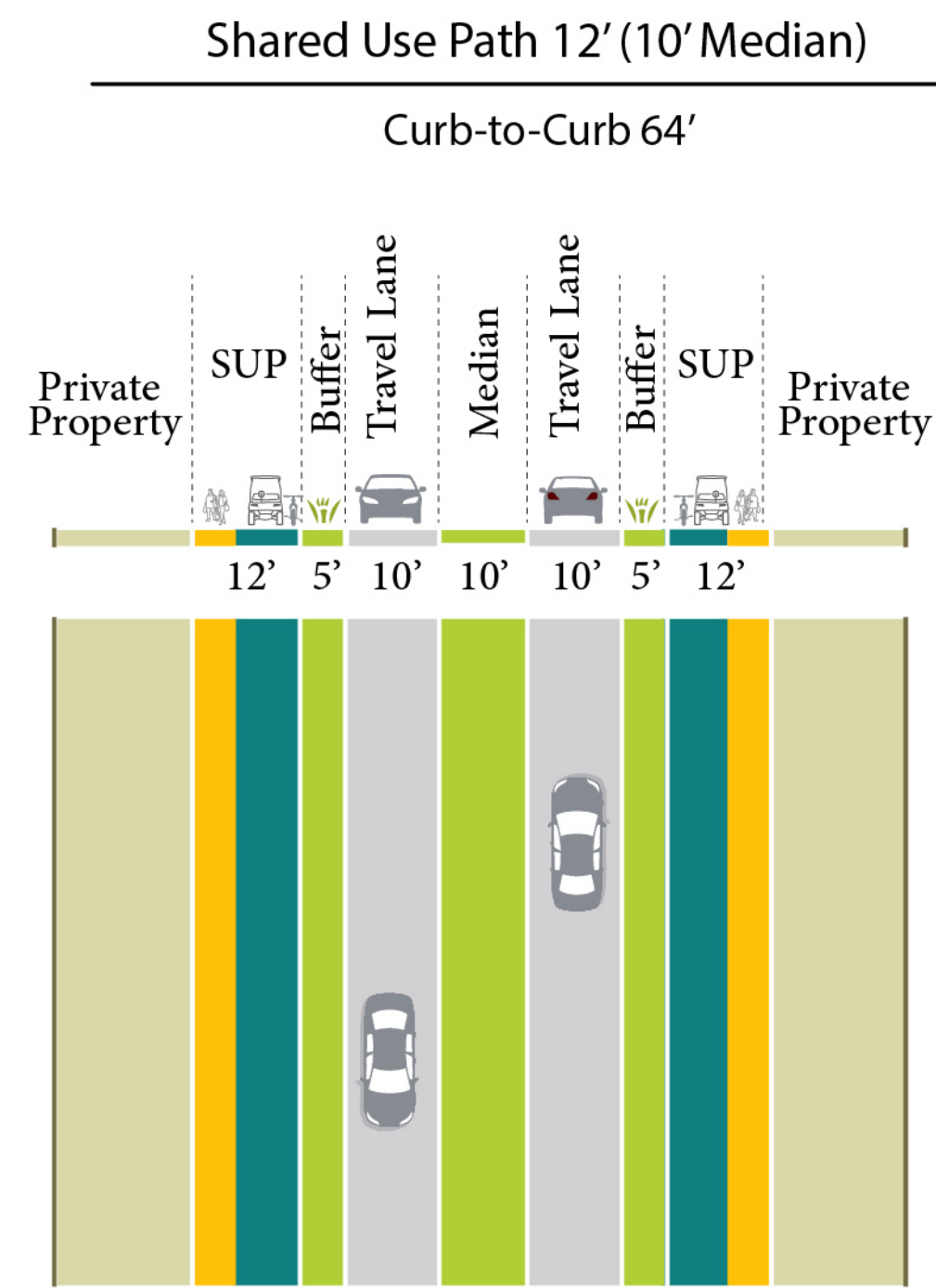
# Padre/Mustang Island Mobility Plan

## Residential Blvd - A



Aquarius St  
Commodores Dr  
Windward Dr

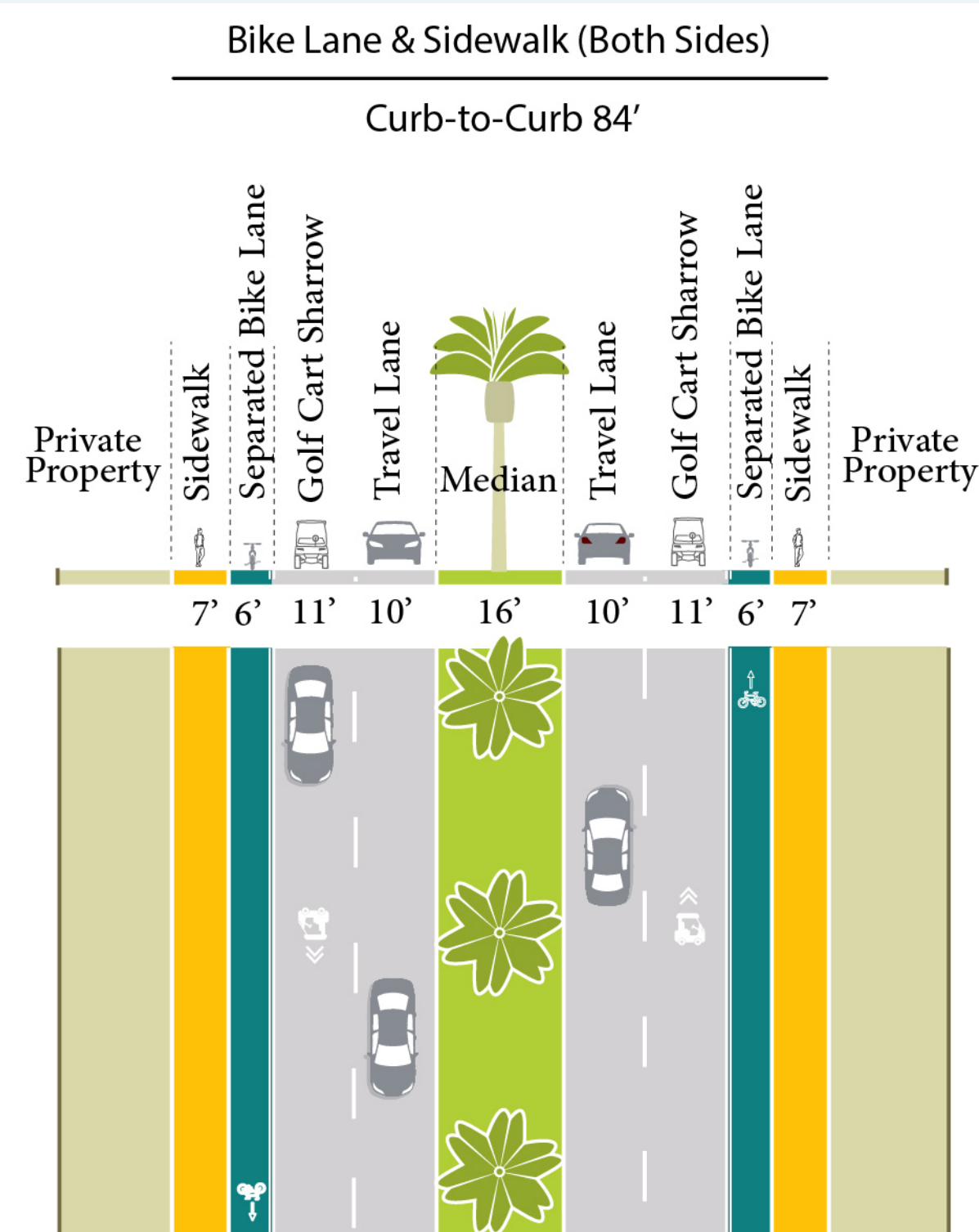
## Residential Blvd - B



Access Rd 2  
Access Rd 4  
Access Rd 5  
Access Rd 6  
Coral Vine St

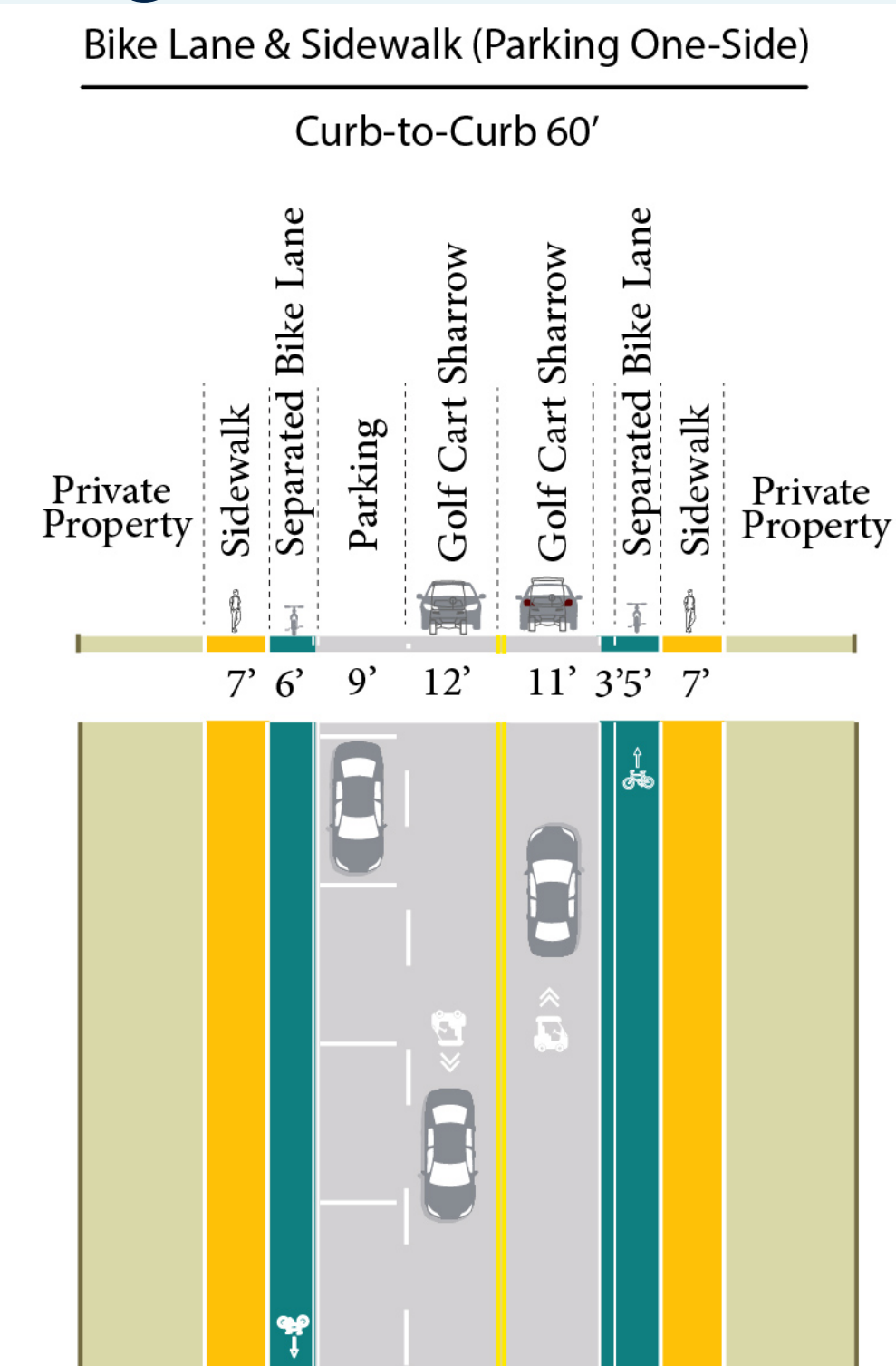
Crows Nest Ave  
Eliff Rd  
Padre Balli Park Rd  
San Dollar Ave  
Zahn Rd

## Residential Blvd - C



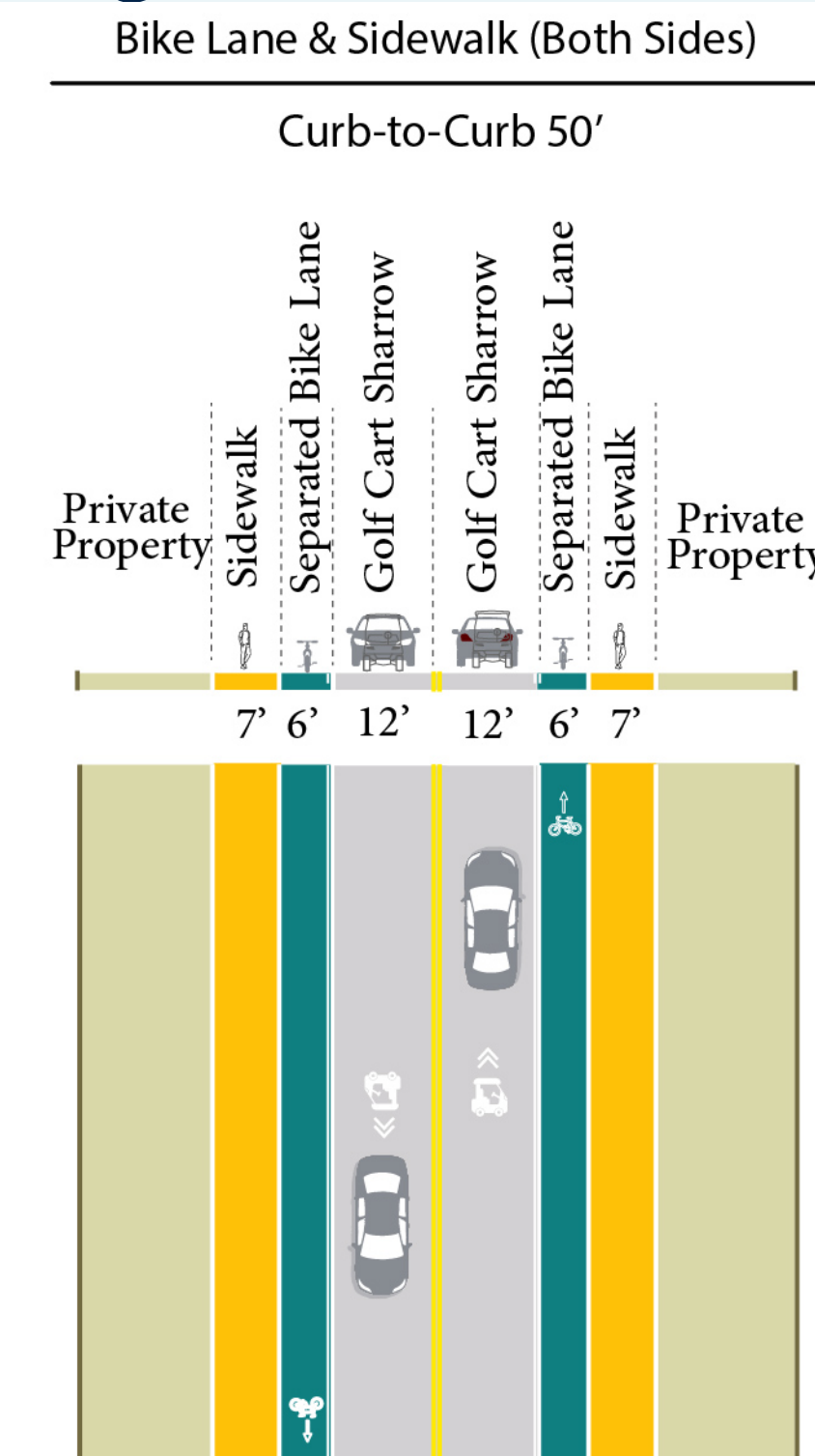
Sea Pines Ave  
Whitecap Blvd

## Neighborhood St - A



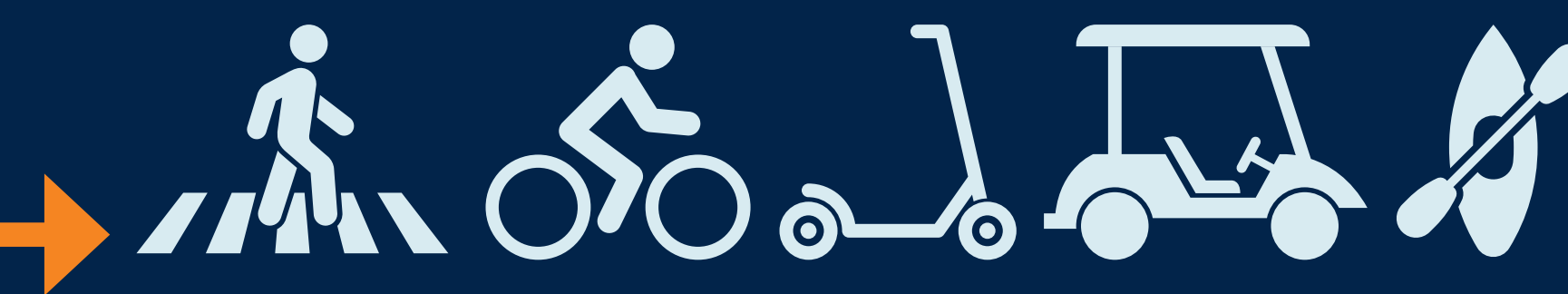
Leeward Dr  
St Bartholomew Dr  
Winward Dr

## Neighborhood St - B



Aquarius St  
Dasmarrinas Dr  
Encantada Ave

Gypsy St  
Palmira Ave



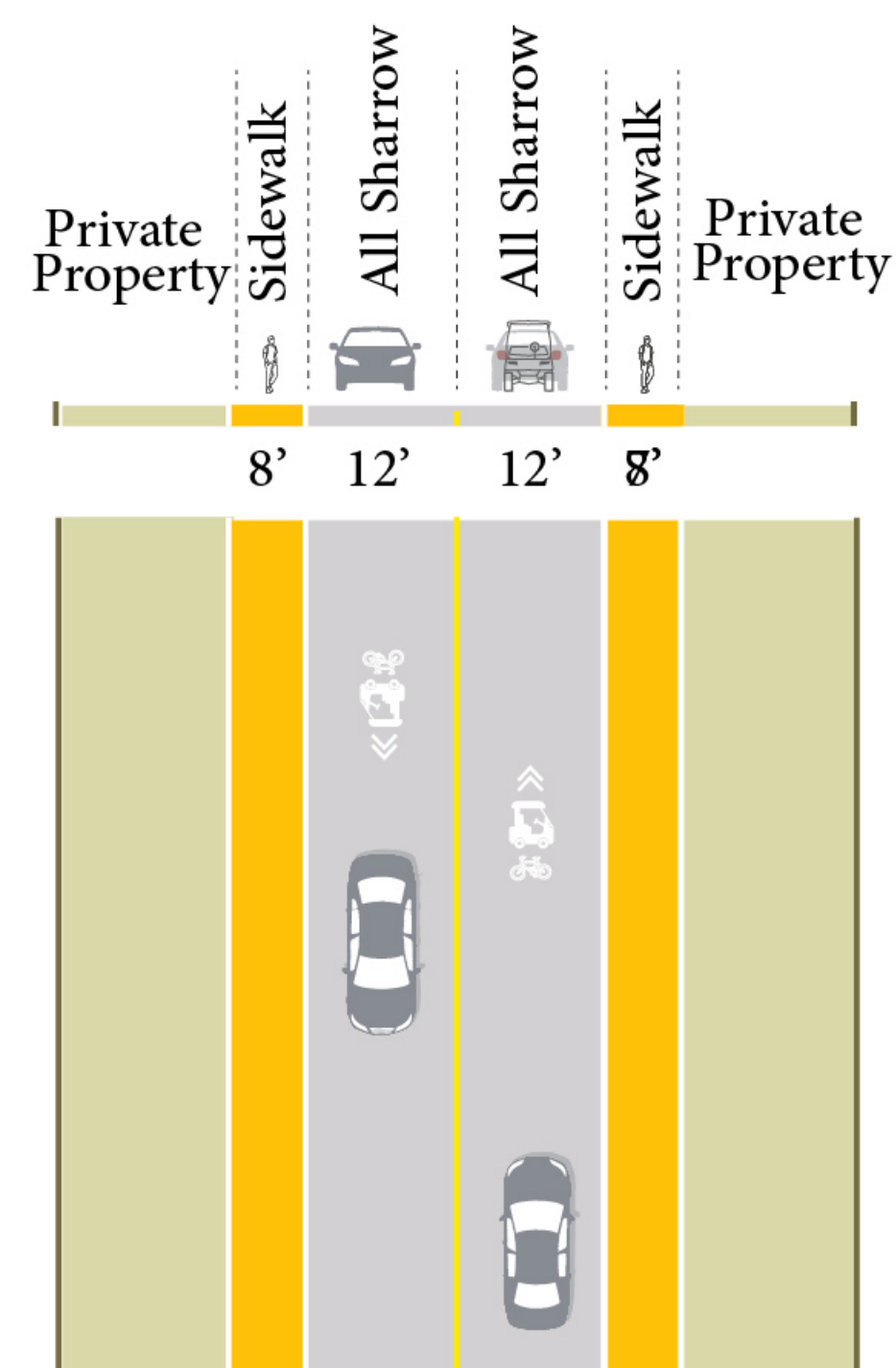


# Padre/Mustang Island Mobility Plan

## Local Street - A

Sidewalk (Both Sides)

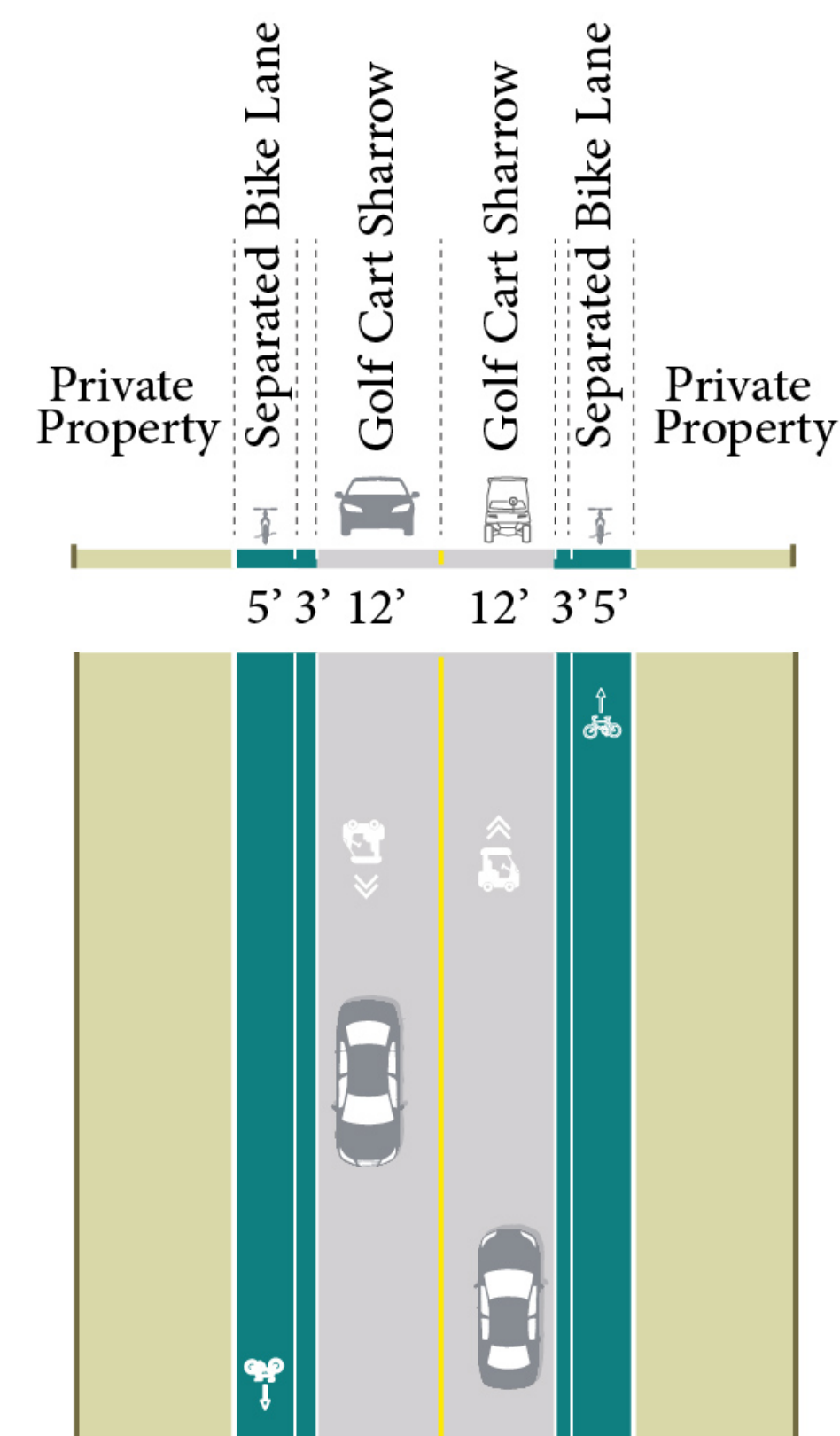
Curb-to-Curb 40'



## Local Street - A Option 2

Bike Lane (Both Sides)

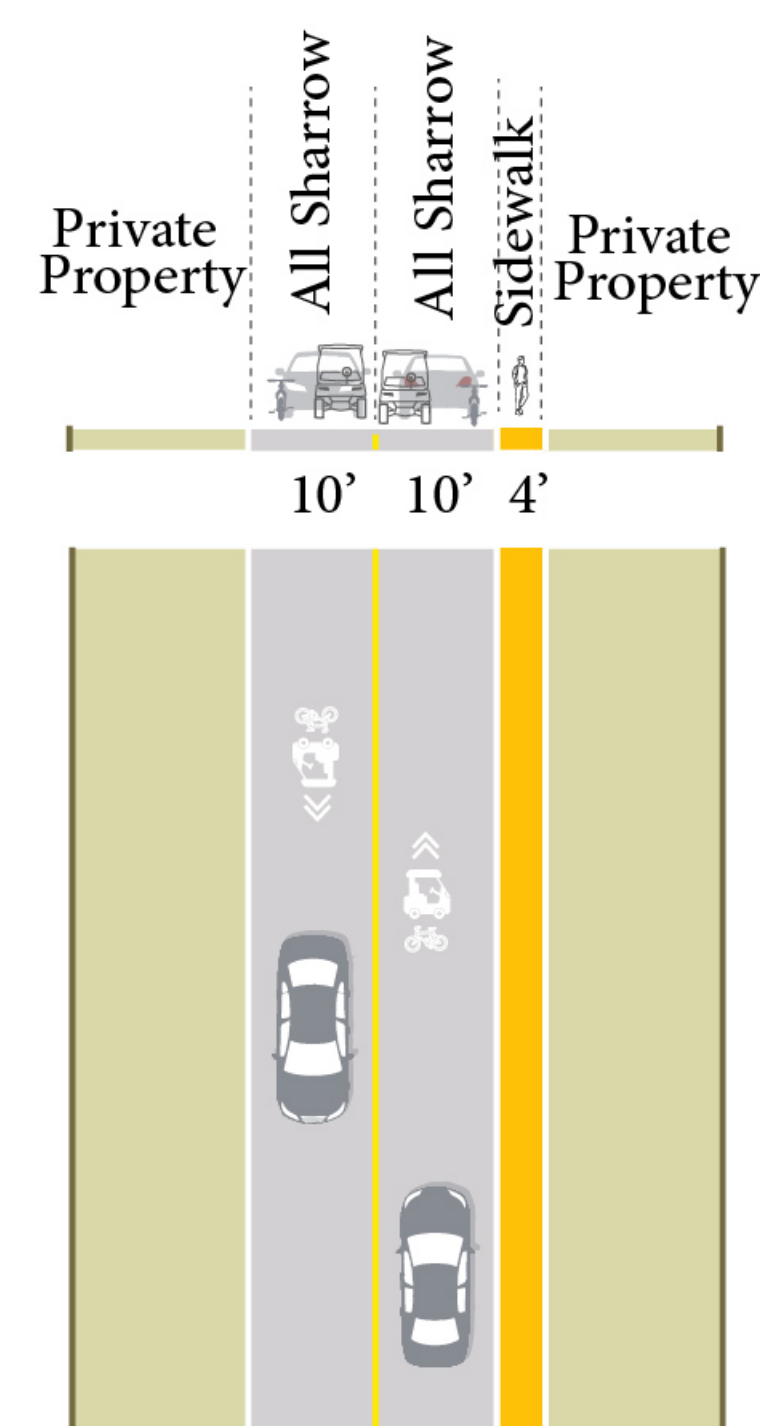
Curb-to-Curb 40'



## Local Street - B

All Sharrow

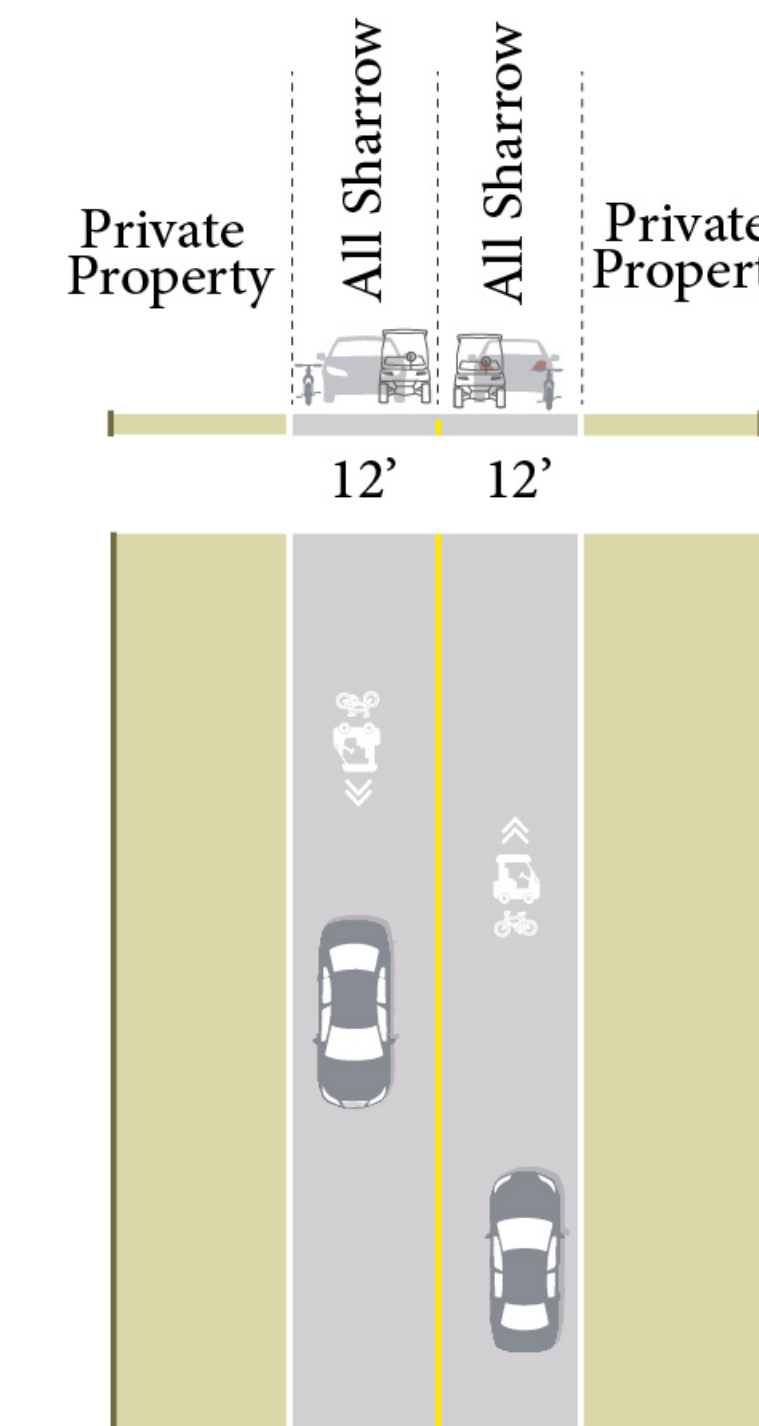
Curb-to-Curb 24'



## Local Street - B Option 2

All Sharrow

Curb-to-Curb 24'



THIS OR THAT

THIS OR THAT





# Padre/Mustang Island Mobility Plan

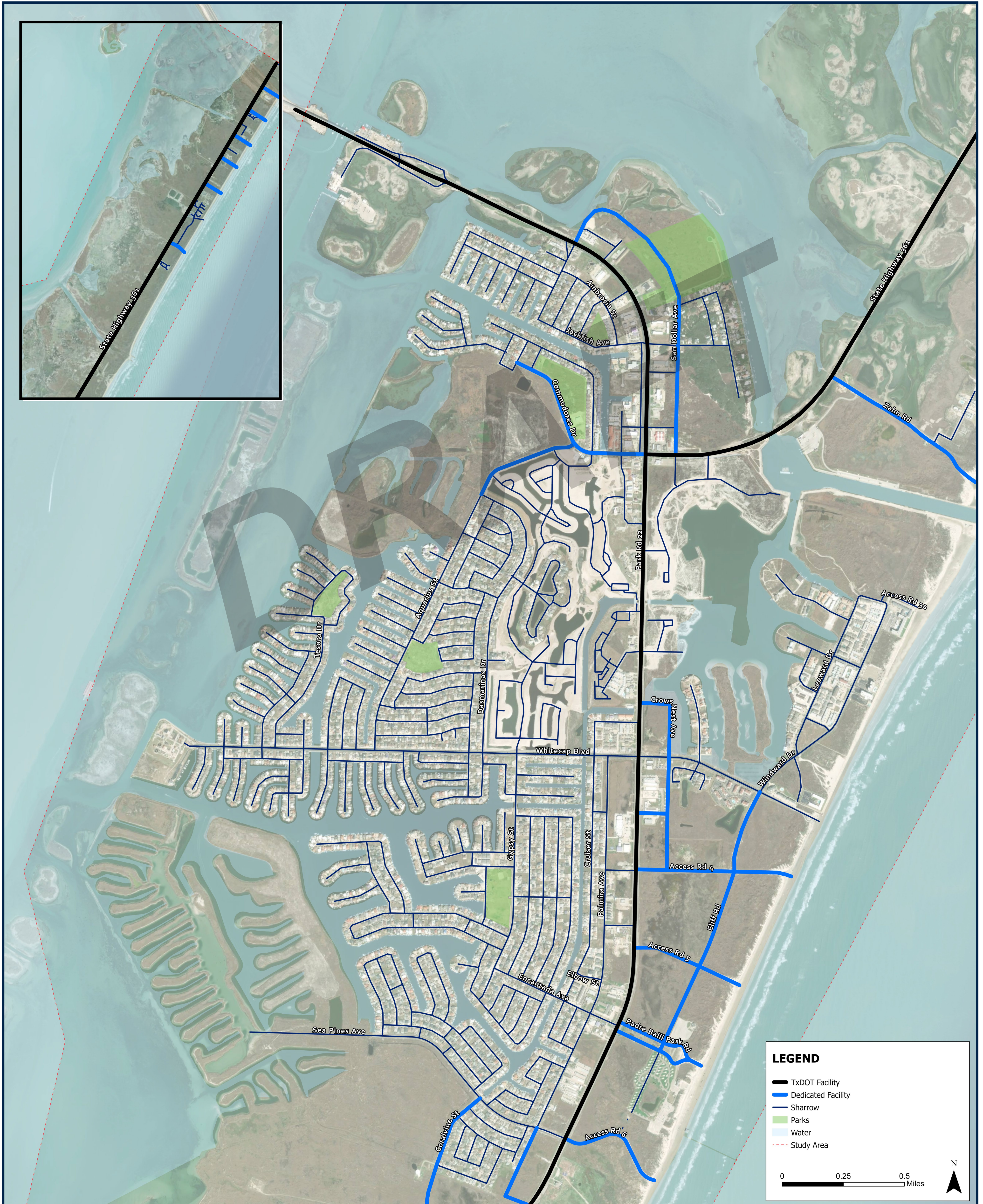
## DRAFT Proposed Sidewalk Network





# Padre/Mustang Island Mobility Plan

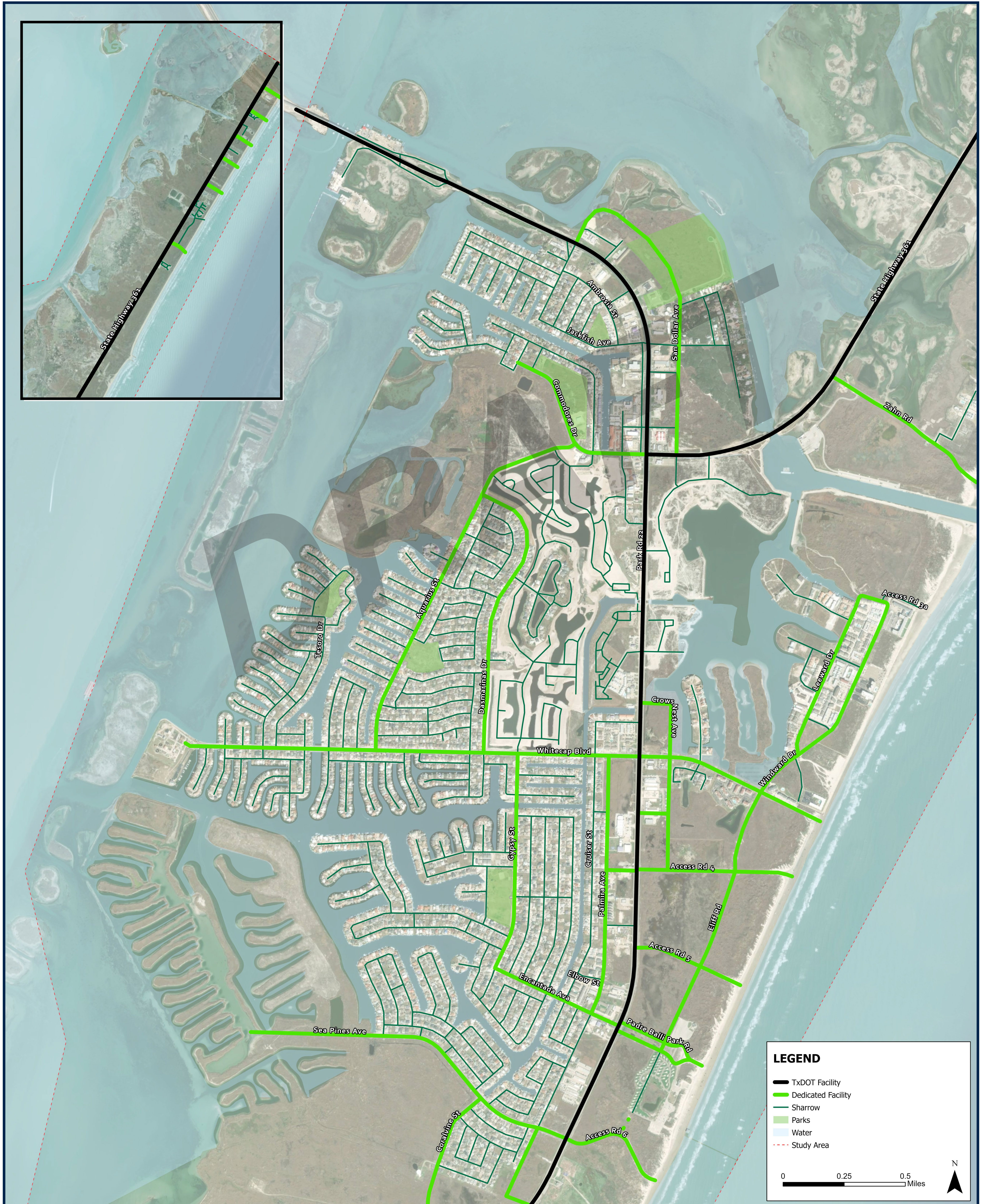
## DRAFT Proposed Golf Cart/NEV Network





# Padre/Mustang Island Mobility Plan

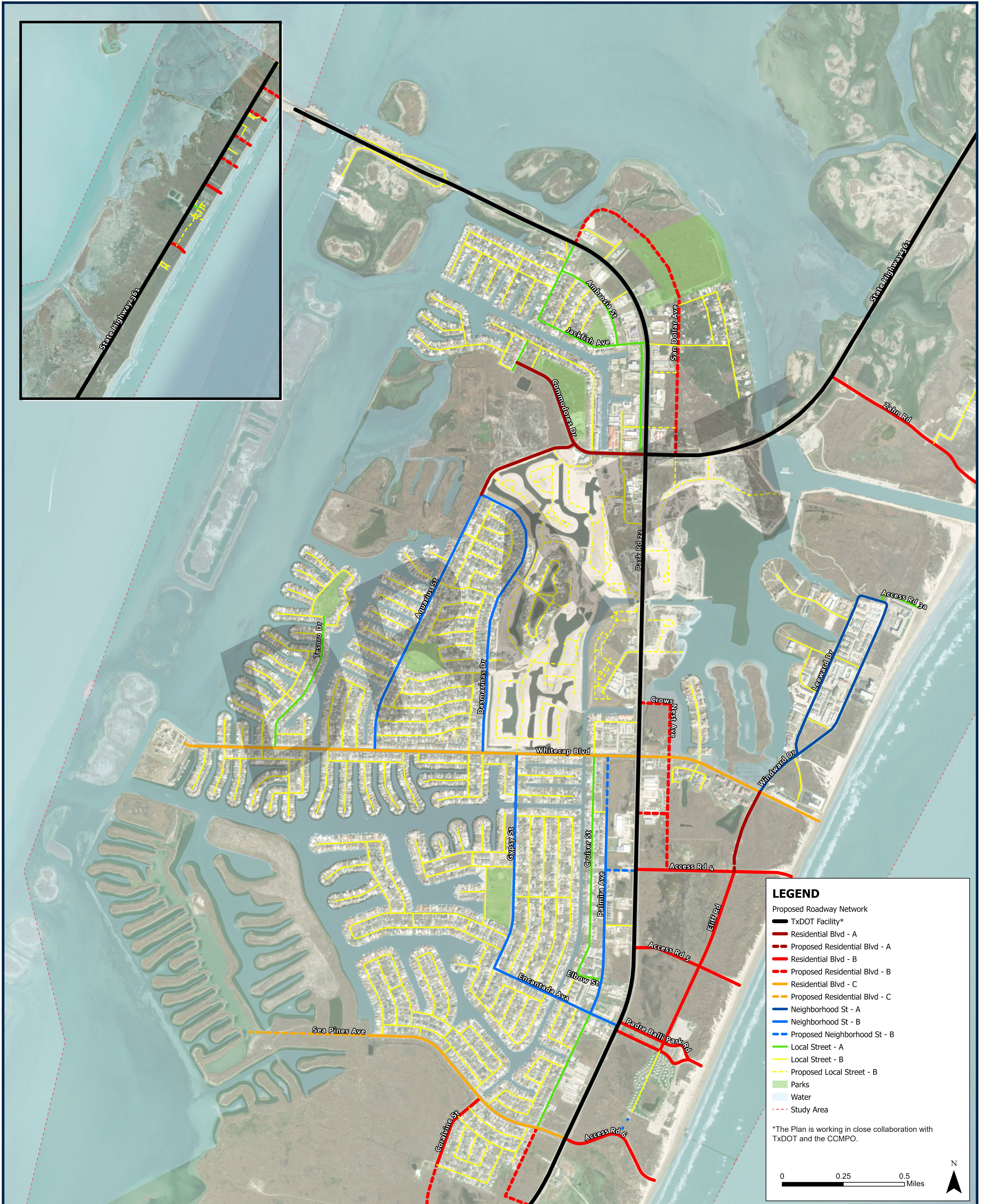
## DRAFT Proposed Bicycle Network





# Padre/Mustang Island Mobility Plan

## DRAFT Recommended Network







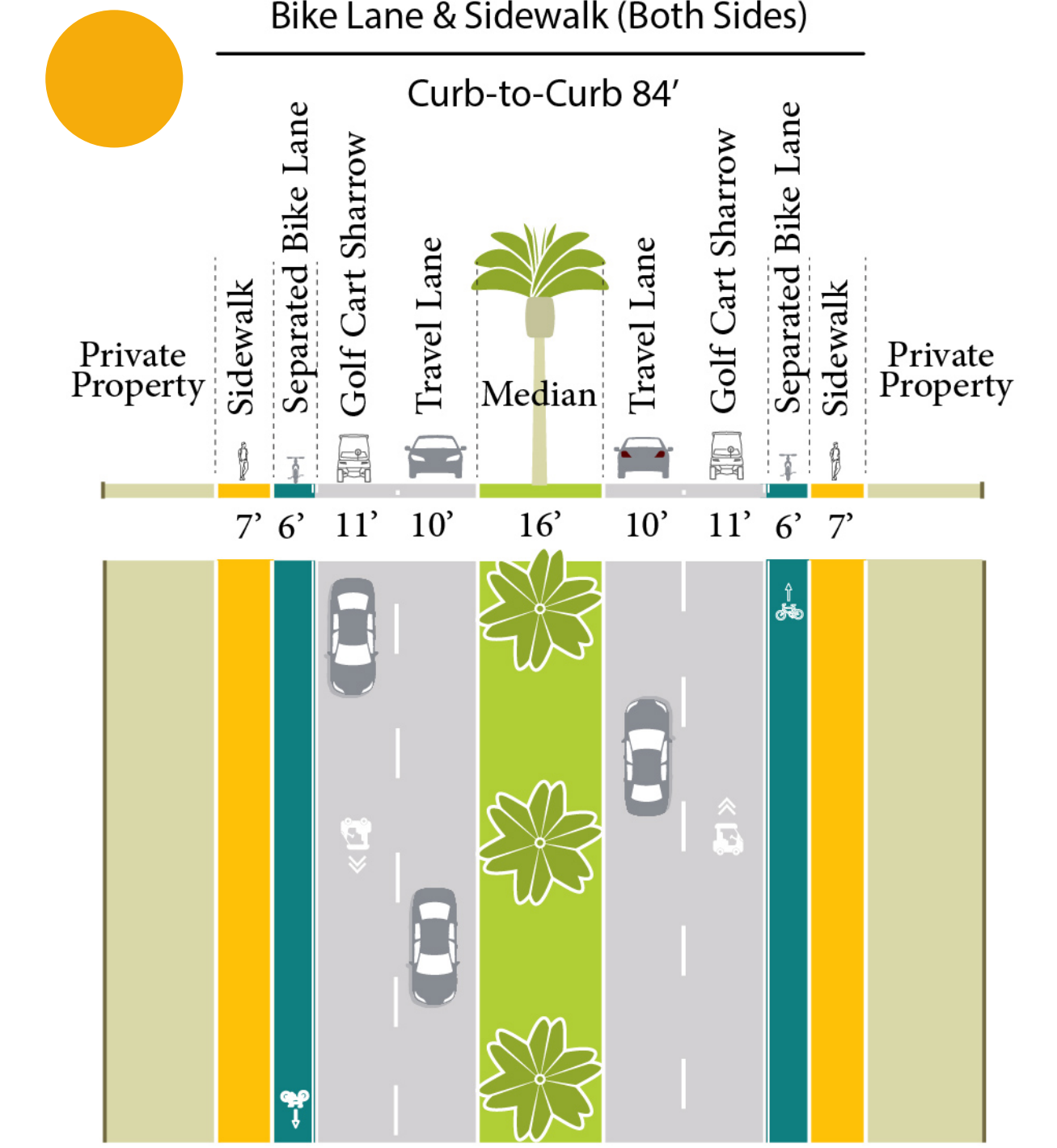
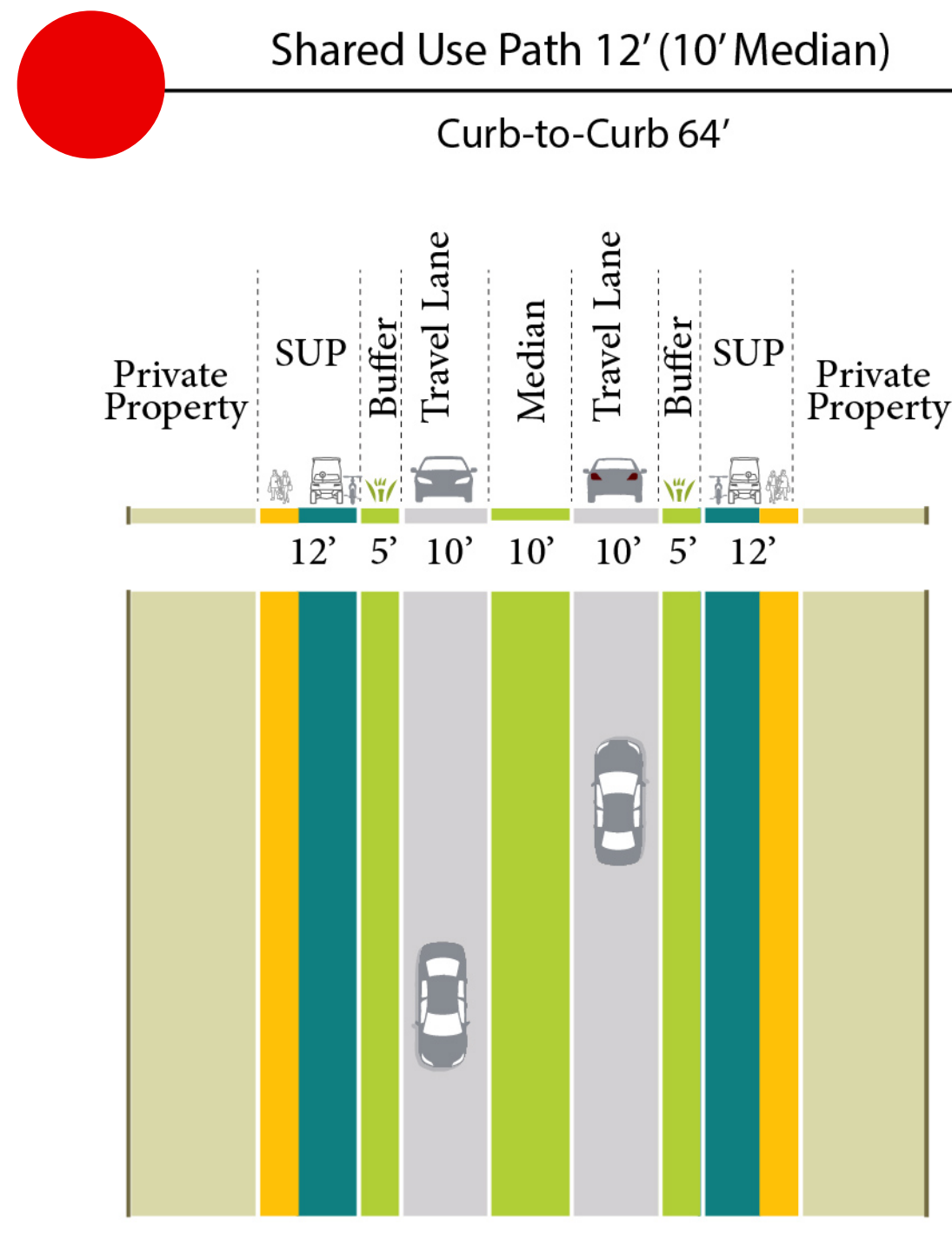
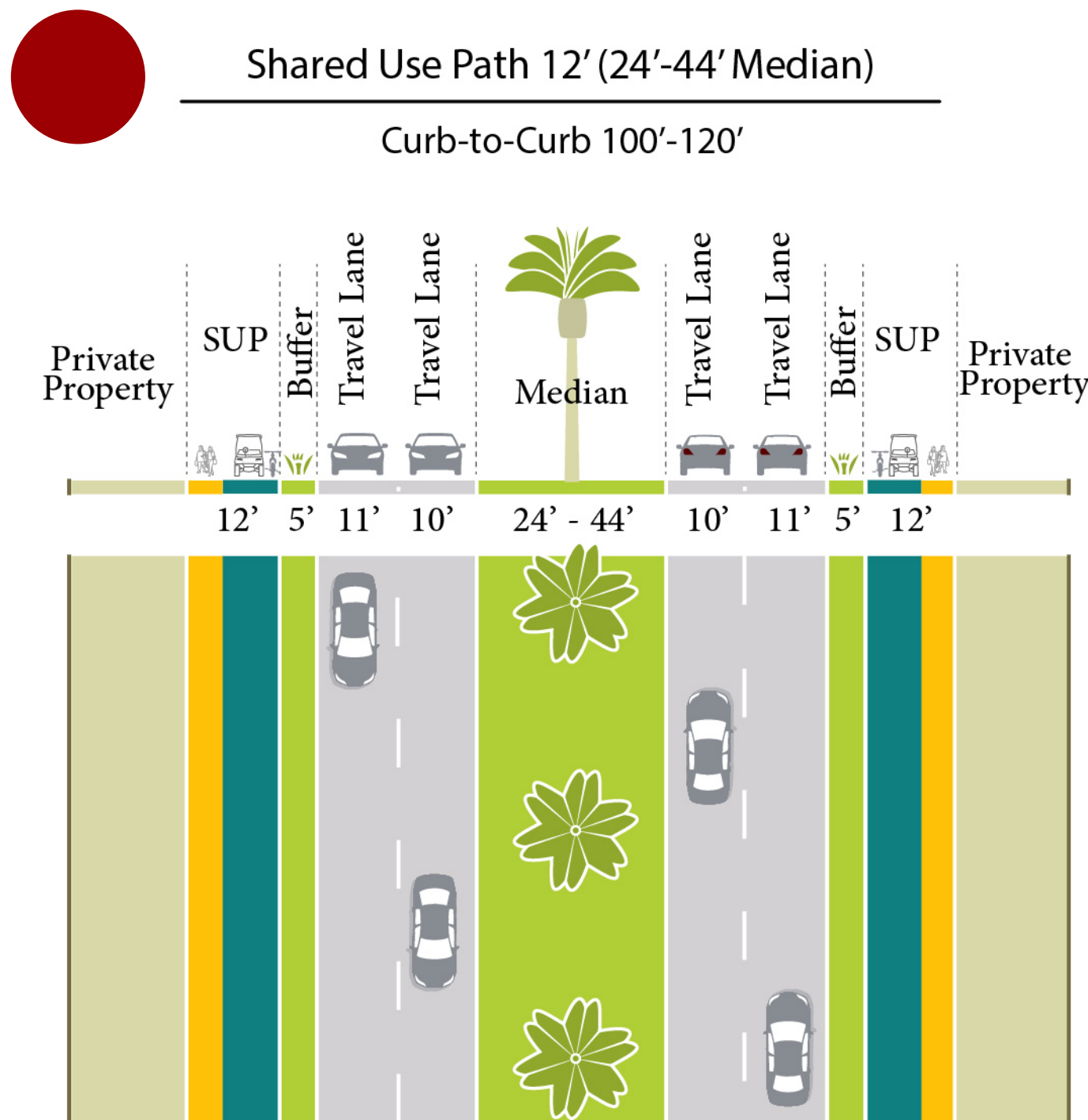
# Padre/Mustang Island Mobility Plan

## DRAFT Example Cross-Sections

### Residential Blvd - A

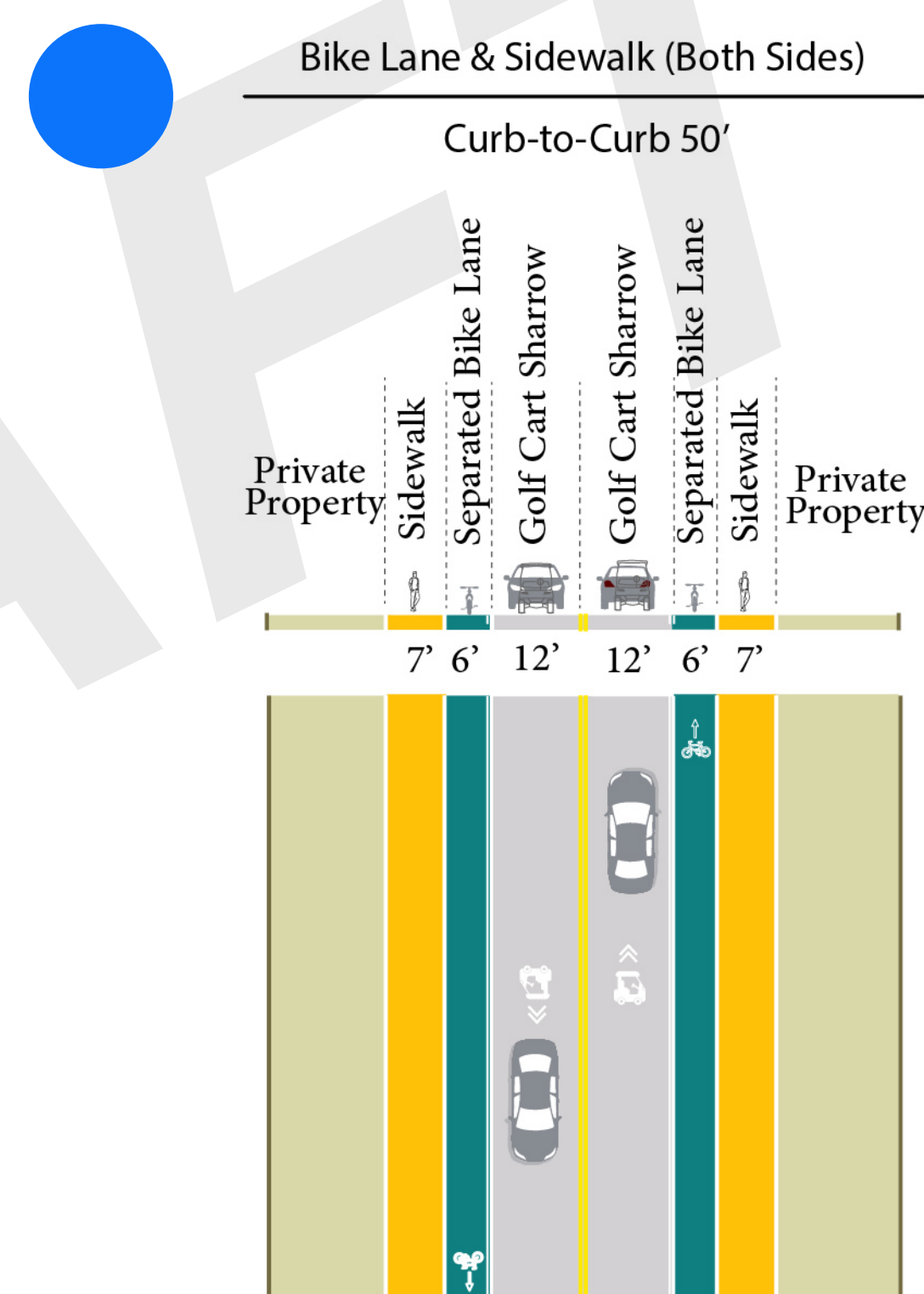
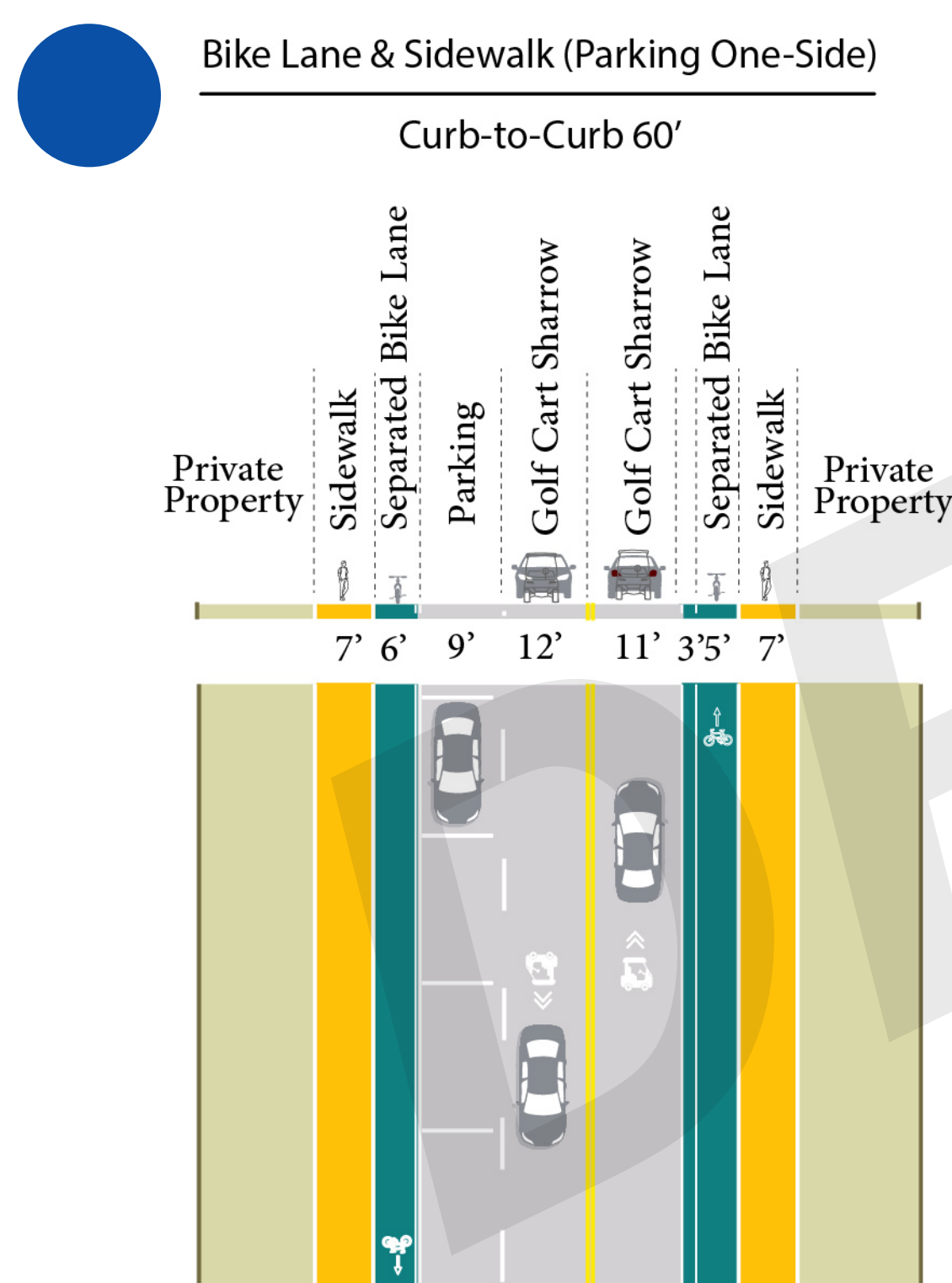
### Residential Blvd - B

### Residential Blvd - C



### Neighborhood St - A

### Neighborhood St - B



### Local St - A

### A (option 2)

### Local St - B

### B (option 2)

