



# 2024 Solid Waste Services Customer Guide



Collection Guidelines	2-3
Recycling & Trash	4
J.C. Elliott Transfer Station	5-6
Super Bag Collection Service	7
Recycle RIGHT Program	8
Recycle RIGHT Tips	9
Recycling Contamination	10
Recyclable Items	11
Non-Recyclable Items	12
Graffiti Removal	13
Litter Critter Program	14
Brush & Bulky Collection Program	15-16
City-Wide Collection Map	17
Authorized Set-Out Dates	18

## Brown/Green Cart (Trash)



Household trash is collected weekly on the same day.

## Blue Cart (Recycling)



Recycling is collected every other week on the same day as your trash.

## Did you know?

Our collection trucks are dual-purpose. They collect trash or recycling on different days.



## 2 Collection Guidelines

- Carts are assigned to your street address.
- Do not take carts when relocating to a new residence.
- Do not use carts to haul trash off premises.
- Report damaged and stolen carts to the City's Call Center by dialing 311.



NEED HELP WITH  
CITY SERVICES?  
**CALL 311 TO REACH OUR  
CUSTOMER CALL CENTER**

### Need an Extra Trash or Recycling Cart?



- An additional trash cart costs \$10.50 a month.
- There is a one-time delivery fee of \$11.55.
- An additional recycling cart can be provided at no cost.
- Contact the City's Call Center by dialing 311 to schedule delivery.

### Need Help Setting Out or Bringing in Your Carts?

If you are physically or medically unable to place your cart at the curb, contact the City's Call Center by dialing 311.



## Setting Out and Storing Carts

- All trash must be bagged and tied to prevent spillage, but do not bag your recyclables.
- Place your cart(s) at the curb, not blocking the street, no later than 7:30 a.m. on your collection day.
- Leave at least 5 feet of clearance from other carts, vehicles, and mailboxes.



- Place your cart away from low-hanging branches, shrubbery, or other obstacles.
- Make sure the lid on your cart closes completely.
- Do not overfill your cart.
- Do not place items on top or beside your cart.
- Move your vehicle off the street to make way for the garbage and recycling trucks.
- Remove your empty cart from the curb the same day it is collected.
- Carts left curbside after the scheduled pick-up are subject to fines.

## Items that do NOT belong in the carts:

- |                       |                          |
|-----------------------|--------------------------|
| • Ammunition          | • Tires                  |
| • Hot Ashes           | • Concrete               |
| • Hazardous Materials | • Construction Materials |
| • Large Appliances    | • Soil or Dirt           |
| • Illegal Substances  | • Paint                  |

## Drop-off at J.C. Elliott Transfer Station



# 4 Recycling & Trash

## Collection

- Trash is collected once weekly on the same day, as determined by your address.
- Recycling is collected once every two weeks on the same day as your trash.
- Collection calendars are available online at [www.cctexas.com/pickupschedule](http://www.cctexas.com/pickupschedule)



## Holiday Collection Schedule

There will be no collection on the following holidays. Please note alternate collection dates. No change in collection schedule for holidays not listed below.

### **Martin Luther King Day (Monday, January 15, 2024)**

Trash & Recycling Collection for Zone 1

Alternate Collection Date: Saturday, January 13, 2024

### **Juneteenth Day (Wednesday, June 19, 2024)**

Trash & Recycling Collection for Zone 3

Alternate Collection Date: Saturday, June 22, 2024

### **Thanksgiving Day (Thursday, November 28, 2024)**

Trash & Recycling Collection for Zone 9

Alternate Collection Date: Saturday, November 30, 2024

### **Christmas Day (Wednesday, December 25, 2024)**

Trash & Recycling Collection for Zone 8

Alternate Collection Date: Saturday, December 28, 2024

### **New Year's Day (Wednesday, January 1, 2025)**

Trash & Recycling Collection for Zone 3

Alternate Collection Date: Saturday, January 4, 2025

Residential customers can use the J.C. Elliott Transfer



Station for additional debris and trash disposal. There is no fee for residential customers paying for City collection services when bringing waste produced at their residence. A valid U.S. government issued ID is required for entry.

## Location

J.C. Elliott Transfer Station, 7001 Ayers St., 78415

## Hours

Monday to Saturday, 8:00 a.m. to 5:00 p.m.

Phone: 361-826-1631

- Loads must be covered and secured.
- A \$15.50 fee (per load) will be charged if not covered/secured.

## J.C. Elliott Transfer Station Accepts:

- Household Trash
- Brush
- Household Appliances, Mattresses, Furniture
- Televisions
- Cooking Oil
- Glass
- Used Motor Oil and Filters in sealed containers
- Residential Construction Materials
- Residential Electronics
- Metal
- Up to 4 tires (20 inches or less)
- Larger tires are subject to a fee

## Contractors & Commercial Operators

- Must have a hauler permit displayed on their vehicle.
- Haulers will be charged according to established rates.

## Electronic Recycling

Only residential electronics are accepted at the J.C. Elliott Transfer Station:

- Computers
- Printers
- Keyboards
- Mobile Devices
- Rechargeable Batteries
- Other Electronics



**Do not place electronics in recycling carts.**

## Household Hazardous Waste Disposal

Items accepted at no charge to Corpus Christi residents:

- Antifreeze
- Solvents
- Brake Fluid
- Transmission Fluid
- Batteries
- Cleaning Solvents
- Oven Cleaner
- Pool Chemicals
- Paint
- Paint Thinner
- Paint Stripper
- Spray Paint
- Weed Killer
- Poisons
- Polishes
- Pesticides
- Insecticides

**Items must be properly labeled, and in container no larger than 5 gallons.**

**Prescription medication belongs in your trash.**

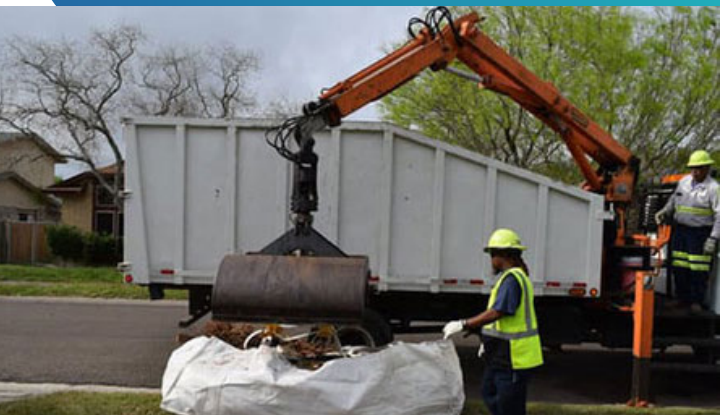


## Firearms and Explosives

Contact CCPD at 361-886-2600 for information about properly disposing of:

- Ammunition
- Explosives, Fireworks
- Firearms





The Super Bag Collection Service is for customers who want convenient, scheduled pickup of leftover material from small home renovations, trash cleanups, landscaping, and other household projects.

- A Super Bag costs \$135, including tax.
- Super Bags are available at the J.C. Elliott Transfer Station for use within City limits.
- No limit to the number of Super Bags customers can purchase at one time.
- Super Bags measure L 96" x W 48" x H 30".
- Super Bags can hold up to 2,200 lbs.
- Place and load the Super Bag within 15 feet of the curb for accessible collection.
- Sidewalks and streets must be kept free from obstructions.
- Contact the City's Call Center by dialing 311 to schedule collection.
- Collected within three business days.
- Residents could be fined for improper set-out.

**For more information about the Super Bag Collection Service, visit [www.cctexas.com/superbag](http://www.cctexas.com/superbag) or contact the City's Call Center by dialing 311.**



## 8 Recycle RIGHT Program

Recycle RIGHT is a city-wide program geared towards improving the recycling habits of residential customers through education and outreach. The goal is to reduce the amount of trash placed in recycling carts.

### Recycling RIGHT:

- Improves the quality of recyclable items.
- Increases the value of recyclable material.
- Reduces processing costs.
- Helps ensure a sustainable recycling program.



Follow the Solid Waste Services Facebook page @ccwasteplace for recycling tips.



Scan me for more info



[www.cctexas.com/howtorecycle](http://www.cctexas.com/howtorecycle)



### Recycle Drop-Off Center

J.C. Elliott Transfer Station  
7001 Ayers Street, 78415  
Monday - Saturday  
8:00 a.m. to 5:00 p.m.



- Do not bag your recyclables; place them loose inside your blue cart.
- Plastic bags of any kind are not recyclable.
- Products made with two or more materials are not recyclable.

**Ex: Spiral notebooks or padded/bubble mailers**

- Recycling symbols on products do not always mean they can be recycled by our City program

## Store Drop-Off

Local retailers provide opportunities to recycle some products.

Items accepted include:

- Air Pillows (for shipping)
- CFL Lightbulbs
- Electronics
- Empty Ink Cartridges
- Product Wrap/  
Packaging for:
- Packing Peanuts
- Plastic Plant Pots
- Single-Use Plastic Bags:

**Paper Towels, Toilet Paper,  
Bottled Water**

**Grocery, Shopping,  
Produce Bags**



For participating retailers, visit  
[www.cctexas.com/howtorecycle](http://www.cctexas.com/howtorecycle)



## CC Recycles App

Take the work out of remembering your local trash and recycling schedule while keeping up with what should or should not go into your blue recycling cart.



## Download Instructions

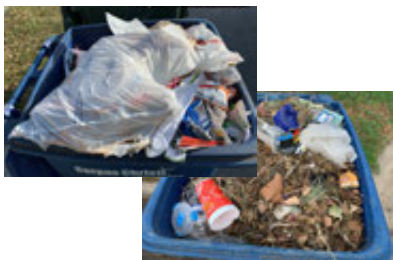
- Point your cell phone camera towards QR Code to scan it
- Click on the link that appears
- Follow the CC Recycles download screen prompt

# 10 Recycling Contamination

Contamination occurs when items not accepted by our City recycling program are placed in the blue recycling cart.

For example:

- Styrofoam
- Glass Bottles
- Plastic Bags
- Food Waste



## Plastic Bags

Plastic bags and similar flimsy plastic materials are one of the worst recycling contaminants. Keep them out of your blue cart to help reduce recycling processing costs.

Examples include:

- Product Wrap
- Bubble Wrap
- Newspaper Bags
- Trash Bags



## Food Waste

Recyclable items become trash when food or beverage residue remains on an item.

## Reduce, Reuse, Recycle, Rethink



- **Reduce** - Purchase items with less packaging. Avoid using disposable plates or utensils.
- **Reuse** - Find an alternative use for things you would normally throw away.
- **Recycle** - Recycle RIGHT. Put the right things in the right cart.
- **Rethink** - Think about what you're buying and if you really need it. Consider how you can further reduce your environmental impacts.

## The City accepts the following recyclable items:

### Paper

- Junk Mail
- Newspapers
- Office Papers
- School Papers
- Magazines, Catalogs
- Paperback Books
- Cardboard Boxes (Empty and Flattened)
- Food Boxes



Paper and cardboard items must be empty and dry, with all packaging materials removed.

### Metal

- Aluminum Cans/Bottles
- Steel Cans
- Metal Lids



Cans must be empty and rinsed.

### Plastic

- Beverage Bottles
- Detergent, Soap, and Shampoo Bottles
- Milk Jugs
- Butter, Sour Cream, and Yogurt Tubs



Plastics must be empty and rinsed.  
Remove bottle caps and toss them in the trash.

## The City of Corpus Christi's recycling program accepts the following plastics:



**The following items should never be placed in your blue cart.**

### Glass

- Bottles & Jars
- Light Bulbs
- Mirrors
- Windows



### Electronics

- Cables
- Tablets
- Cell Phones
- TVs & Monitors



### Plastic

- Bags
- Hangers
- Lunch Baggies
- Plastic Wrap & Film



### Yard Waste

- Leaves
- Grass Clippings
- Branches
- Bushes



### Aluminum Foil

- Aluminum Pans
- Wrappers
- Dirty Foil
- Sauce Packets



### Pizza Boxes, etc.

- Paper Plates & Cups
- Take-Out Boxes
- Paper Napkins & Towels



### Styrofoam

- Plates & Cups
- Packaging
- Egg Cartons



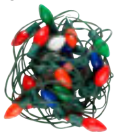
### Ceramics

- Dishes & Bakeware
- Pottery
- Figurines



### Hoses/Cords

- Electrical Cords
- Ribbon
- String Lights
- Rope



### Drink Cartons

- Milk & Juice
- Soup
- Ice Cream
- Wine



### Hazardous Waste

- Pesticides
- Antifreeze
- Paint
- Batteries
- Motor Oil & Fuel



### Fabrics

- Bedding
- Curtains
- Clothing
- Towels
- Belts/Shoes



### Other Non-Recyclables

- Diapers
- Medication
- Pet Training Pads
- Toilet Paper
- Syringes
- Pots & Pans



The Corpus Christi Police Department (CCPD) strongly encourages you to report graffiti in your neighborhood. Graffiti on buildings and fences reduces the property values of everyone in the community and contributes to a sense of decay.

- To schedule a graffiti cleanup, contact the City's Call Center by dialing 311.
- To report an act of graffiti in progress, call 911.
- To report graffiti that has already occurred, call the CCPD non-emergency number at 361-886-2600.

## **Unknown Graffiti Vandals**

The Corpus Christi Police Department's Graffiti Task Force needs your help identifying unknown graffiti offenders. Anyone with information should call Crime Stoppers at 361-888-TIPS.

## **Dead Animal Collection**

Solid Waste Services will assist residents with dead animal collections. Request the collection by contacting the City's Call Center by dialing 311. If possible, bag the dead animal and place it on the right-of-way in front of your home.

## Community Cleanup Program

The Litter Critter is a FREE monthly community cleanup event that allows customers the opportunity to dispose of residential trash, brush, and household items.

For a complete list of what can and cannot be accepted into the Litter Critter Program, visit [www.cctexas.com/sws](http://www.cctexas.com/sws).

## 2024 Litter Critter Schedule

Briscoe King Pavilion 15820 Park Road 22	Saturday January 13
Flour Bluff High School 2505 Waldron Road	Saturday February 10
Calallen High School 4001 Wildcat Drive	Saturday March 9
West Oso High School 754 Flato Road	Saturday April 13
Veterans Memorial High School 3750 Cimarron Blvd.	Saturday May 11
W.B. Ray High School 1002 Texan Trail	Saturday June 8
Briscoe King Pavilion 15820 Park Road 22	Saturday July 13
Flour Bluff High School 2505 Waldron Road	Saturday August 10
Tuloso - Midway High School 2653 McKinzie Road	Saturday September 14
West Oso High School 754 Flato Road	Saturday October 12
Veterans Memorial High School 3750 Cimarron Blvd.	Saturday November 9
W.B. Ray High School 1002 Texan Trail	Saturday December 14

- Brush is collected from your residence four times each year.
- Only set-out brush for collection during authorized set-out dates.
- Brush will be collected the week following the setout dates for your area.
- The 2024 brush and bulky collection schedules are available on pages 17 and 18 in this guide.

## Brush Set-Out Guidelines

Brush set-out for collection includes:

- Shrubs
- Limbs
- Grass Clippings
- Weeds
- Leaves
- Mulch
- Tree Trimmings
- Lumber is not considered brush
- Customers are limited to one truckload of materials during each scheduled brush collection.
- There is a fee for each additional truckload collected.
- Place small yard waste in your green/brown trash cart throughout the year.



### Do not place brush on or near the following:

- |                     |  |
|---------------------|--|
| • Streets/Sidewalks | • Neighboring Properties                 |
| • Gutters           | • By Utility Poles                       |
| • Against Fences    | • Beneath Wires                          |
| • Drainage Ditches  | • Under Low-Hanging Branches             |
| • Cars              | • Improper set-out could result in a fee |
| • Gas/Water Meters  |  |
| • Mailboxes         |  |
| • Vacant Lots       |  |

**Heavy brush or bulky items shall generally be collected in the same location as trash and recycling carts.**



## Collection Schedule

- Bulky items are collected twice per year.
- Place your items curbside for collection during authorized bulky items set-out dates only.
- The 2024 bulky collection schedules are available on pages 17 and 18 in this guide.

## Items for Bulky Collection

- Indoor/Outdoor Furniture
- Mattresses
- Box Springs
- Carpet
- Metal or Plastic Swing Sets
- Plastic Swimming Pools
- Large Toys
- Bicycles
- Aquariums
- Large Household Appliances



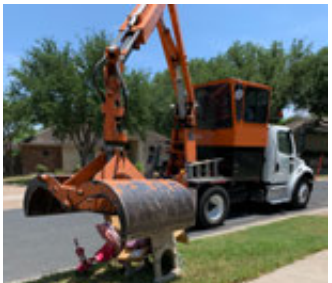
- Up to 4 tires, 20 inches or less

**Additional tires are subject to a fee**

## Guidelines

Separate bulky items into individual piles by group:

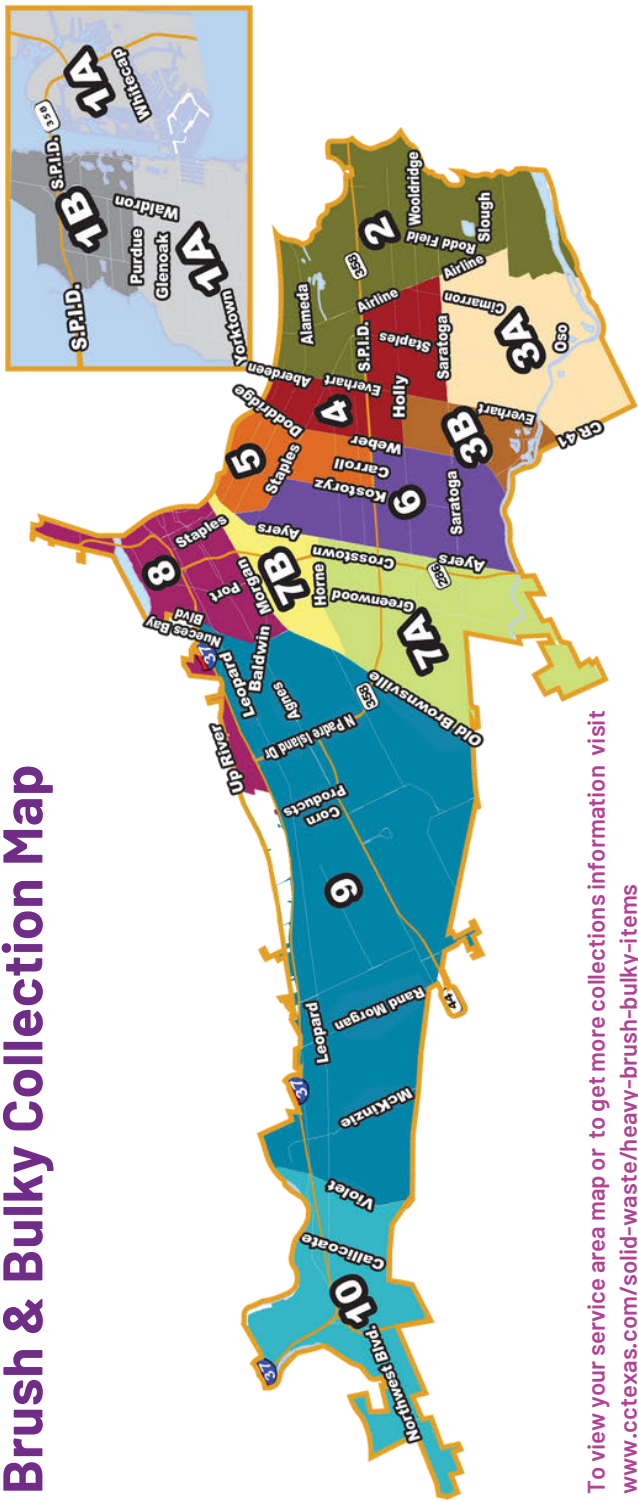
- Metal
- Non-Metal
- Brush
- Tires



**Do not place chemicals, construction materials, or concrete curbside for bulky collection.**

**Customers are limited to one truckload of materials during a regularly scheduled bulky collection.**

# Brush & Bulky Collection Map



To view your service area map or to get more collections information visit [www.cctexas.com/solid-waste/heavy-brush-bulky-items](http://www.cctexas.com/solid-waste/heavy-brush-bulky-items)

Collection Areas	Bulky & Brush Items Set-Out Dates <i>Jan. 2024 - May 2024</i>	Brush Items Only Set-Out Dates <i>May 2024 - Sept. 2024</i>	Collection Areas	Bulky & Brush Items Set-Out Dates <i>Sept. 2024 - Jan. 2025</i>	Brush Items Only Set-Out Dates <i>Jan. 2025 - May 2025</i>
Area 1-A	Jan. 24 - Jan. 28	May 29 - June 2	Area 1-A	Sept. 18 - Sept. 22	Jan. 22 - Jan. 26
Area 1-B	Jan. 31 - Feb. 4	June 5 - June 9	Area 1-B	Sept. 25 - Sept. 29	Jan. 29 - Feb. 2
Area 2	Feb. 7 - Feb. 11	June 12 - June 16	Area 2	Oct. 2 - Oct. 6	Feb. 5 - Feb. 9
Area 3-A	Feb. 21 - Feb. 25	June 19 - June 23	Area 3-A	Oct. 16 - Oct. 20	Feb. 12 - Feb. 16
Area 3-B	Feb. 28 - Mar. 3	June 26 - June 30	Area 3-B	Oct. 23 - Oct. 27	Feb. 19 - Feb. 23
Area 4	Mar. 6 - Mar. 10	July 3 - July 7	Area 4	Oct. 30 - Nov. 3	Feb. 26 - Mar. 2
Area 5	Mar. 20 - Mar. 24	July 17 - July 21	Area 5	Nov. 13 - Nov. 17	Mar. 12 - Mar. 16
Area 6	Mar. 27 - Mar. 31	July 24 - July 28	Area 6	Nov. 20 - Nov. 24	Mar. 19 - Mar. 23
Area 7-A	Apr. 3 - Apr. 7	July 31 - Aug. 4	Area 7-A	Nov. 27 - Dec. 1	Mar. 26 - Mar. 30
Area 7-B	Apr. 10 - Apr. 14	Aug. 7 - Aug. 11	Area 7-B	Dec. 4 - Dec. 8	Apr. 2 - Apr. 6
Area 8	Apr. 24 - Apr. 28	Aug. 14 - Aug. 18	Area 8	Dec. 18 - Dec. 22	Apr. 9 - Apr. 13
Area 9	May 1 - May 5	Aug. 21 - Aug. 25	Area 9	Dec. 25 - Dec. 29	Apr. 16 - Apr. 20
Area 10	May 15 - May 19	Sept. 4 - Sept. 8	Area 10	Jan. 8 - Jan. 12	Apr. 30 - May 4

Brush & Bulky items will be collected beginning the Monday following the authorized set-out dates for your area.

For questions about  
collection:

**J.C. Elliott Transfer Station**

**Brush & Bulky**

**Recycling**

**Trash**



**Call 3-1-1 to reach our  
Customer Call Center**



**@CCWastePlace**

**Para una guía en español, visite  
[www.cctexas.com /sws](http://www.cctexas.com/sws)**